

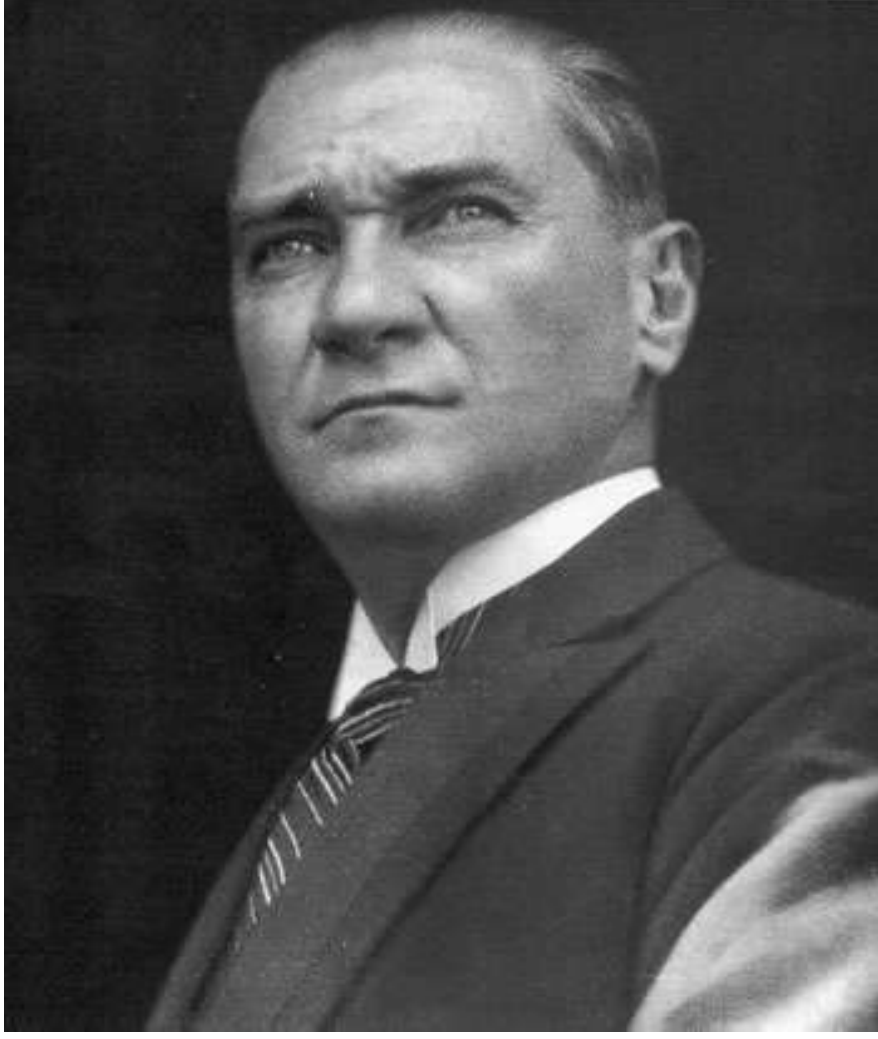


İTSO[®]
İNEGÖL TİCARET ve SANAYİ ODASI

İNEGÖL'ÜN DIŞ TİCARETİNDE SON 10 YIL

2002 – 2011 YILLARI ARASI
KARŞILAŞTIRMALI DIŞ TİCARET İSTATİSTİKLERİ

İTSO – BİLGİ HİZMETLERİ VE PROJE MÜDÜRLÜĞÜ



Yeni Türkiye'mizi lâayık olduđu yüceliđe ulařtırabilmek için mutlaka iktisadiyatımıza birinci derecede ve en çok ehemmiyet vermek mecburiyetindeyiz. Zamanımız tamamen bir iktisat devrinden başka bir Őey deđildir.

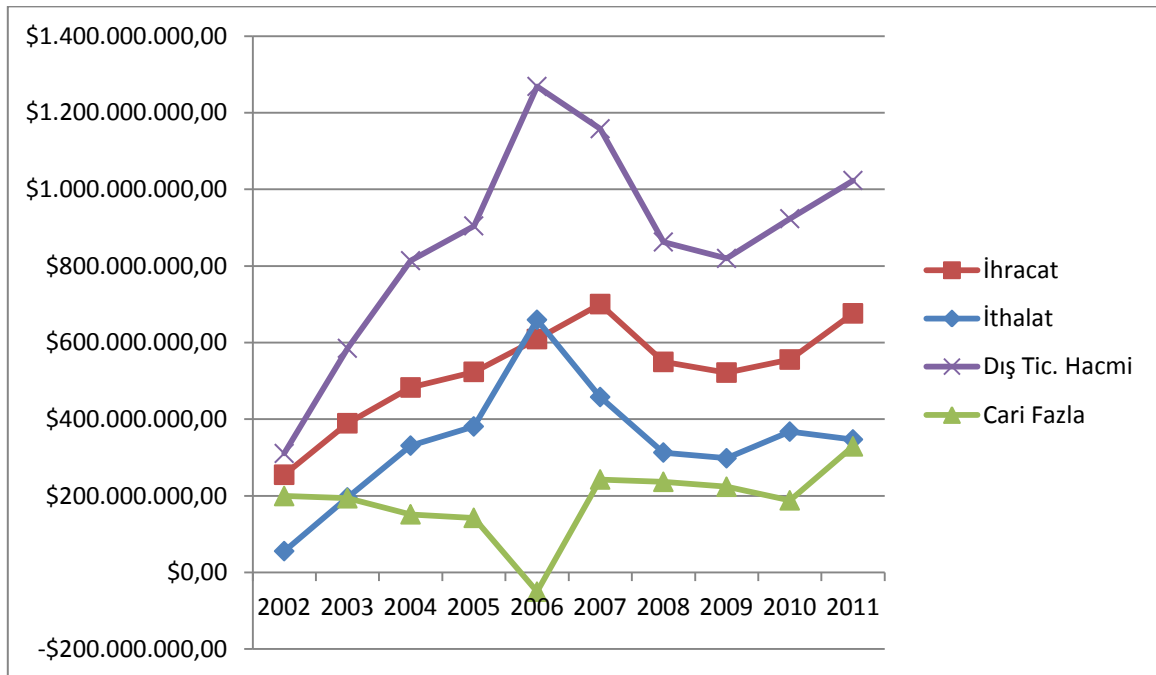
K. Atatürk

İNEGÖL'ÜN DIŞ TİCARETİNDE SON 10 YIL

Yıl bazında baktığımızda, son yıllardaki dış ticaret hacminin **1 milyar dolar** seviyelerinde olduğunu görüyoruz. Son on yılı dikkate aldığımızda, en büyük cari fazlanın 2011 yılında gerçekleştiğini görmekteyiz.

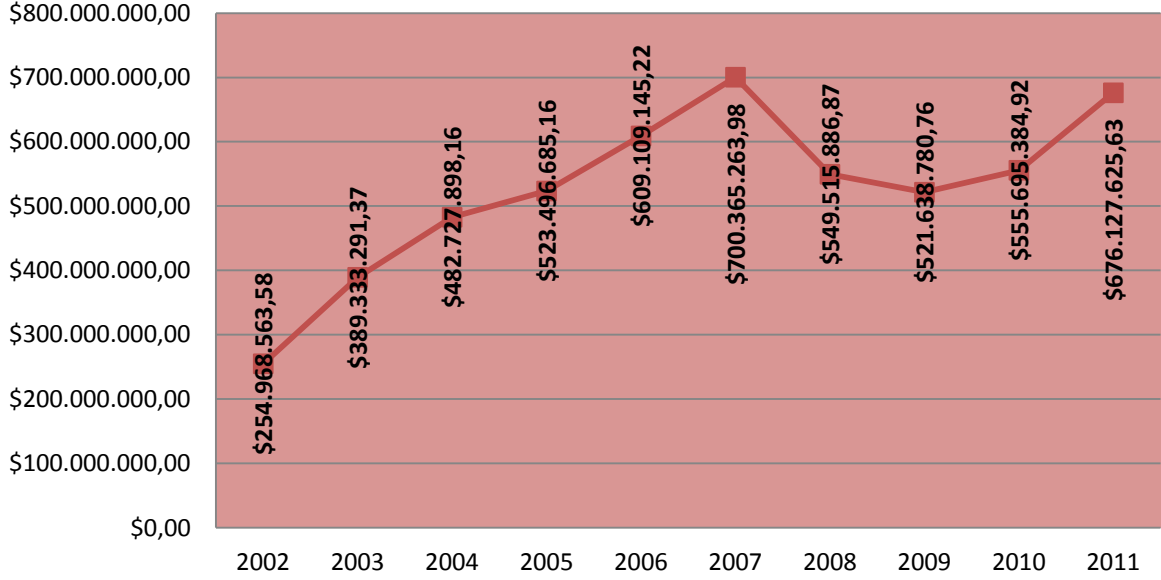
YIL	İHRACAT \$	İTHALAT \$	DIŞ TİCARET HACMİ \$	CARİ FAZLA \$
2011	\$676.127.625,63	\$347.056.818,25	\$1.023.184.443,88	\$329.070.807,38
2010	\$555.695.384,92	\$367.520.516,40	\$923.215.901,32	\$188.174.868,52
2009	\$521.638.780,76	\$298.019.143,23	\$819.657.923,99	\$223.619.637,53
2008	\$549.515.886,87	\$312.930.517,69	\$862.446.404,56	\$236.585.369,18
2007	\$700.365.263,98	\$457.756.539,86	\$1.158.121.803,84	\$242.608.724,12
2006	\$609.109.145,22	\$659.387.727,34	\$1.268.496.872,56	-\$50.278.582,12
2005	\$523.496.685,16	\$381.015.010,39	\$904.511.695,55	\$142.481.674,77
2004	\$482.727.898,16	\$330.989.777,49	\$813.717.675,65	\$151.738.120,67
2003	\$389.333.291,37	\$195.688.099,40	\$585.021.390,77	\$193.645.191,97
2002	\$254.968.563,58	\$55.595.242,69	\$310.563.806,27	\$199.373.320,89
10 YIL TOPLAM	\$5.262.978.525,65	\$3.405.959.392,74	\$8.668.937.918,39	\$1.857.019.132,91

İNEGÖL'ÜN 2002 – 2011 YILLARI ARASI DIŞ TİCARET TRENDİ

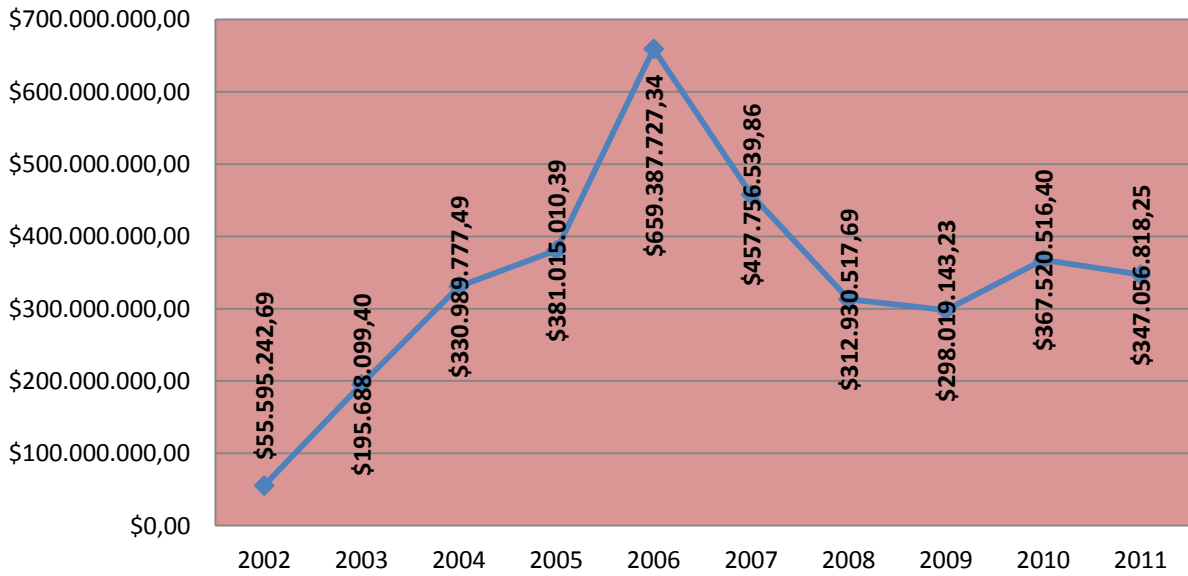


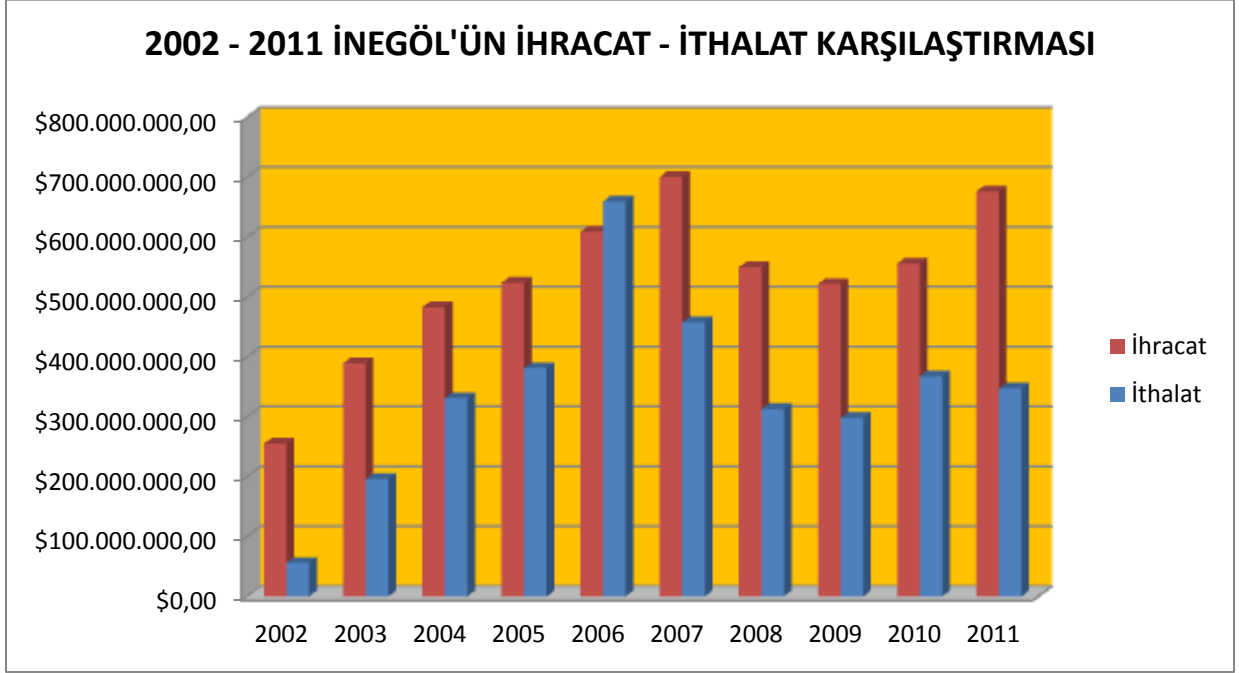
İNEGÖL'ÜN DIŞ TİCARETİNDE SON 10 YIL

2002 - 2011 İNEGÖL'ÜN İHRACAT TRENDİ



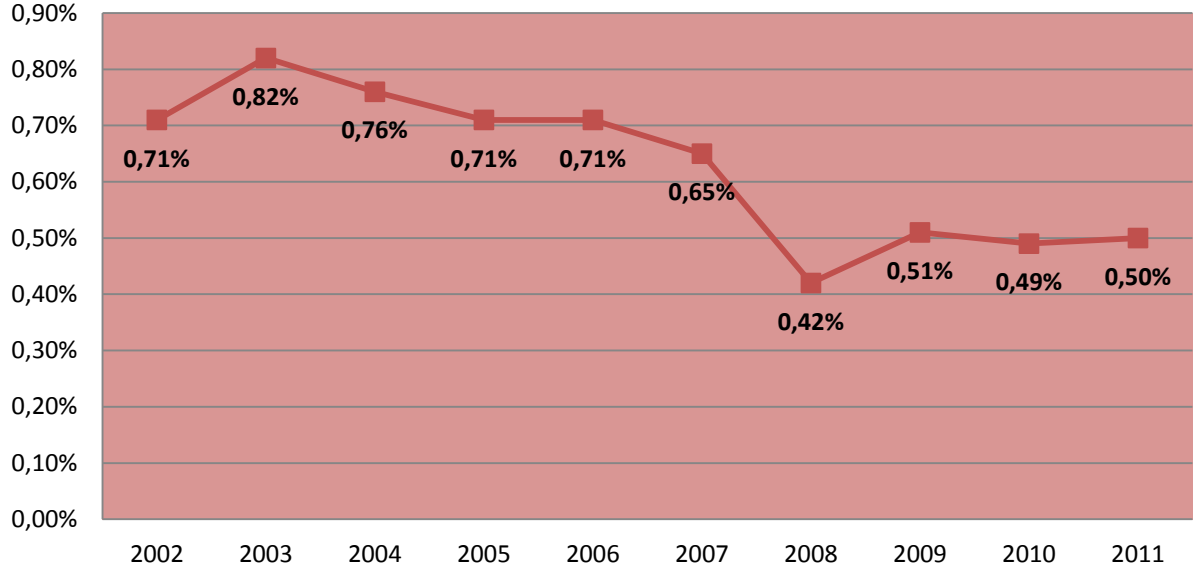
2002 - 2011 İNEGÖL'ÜN İTHALAT TRENDİ



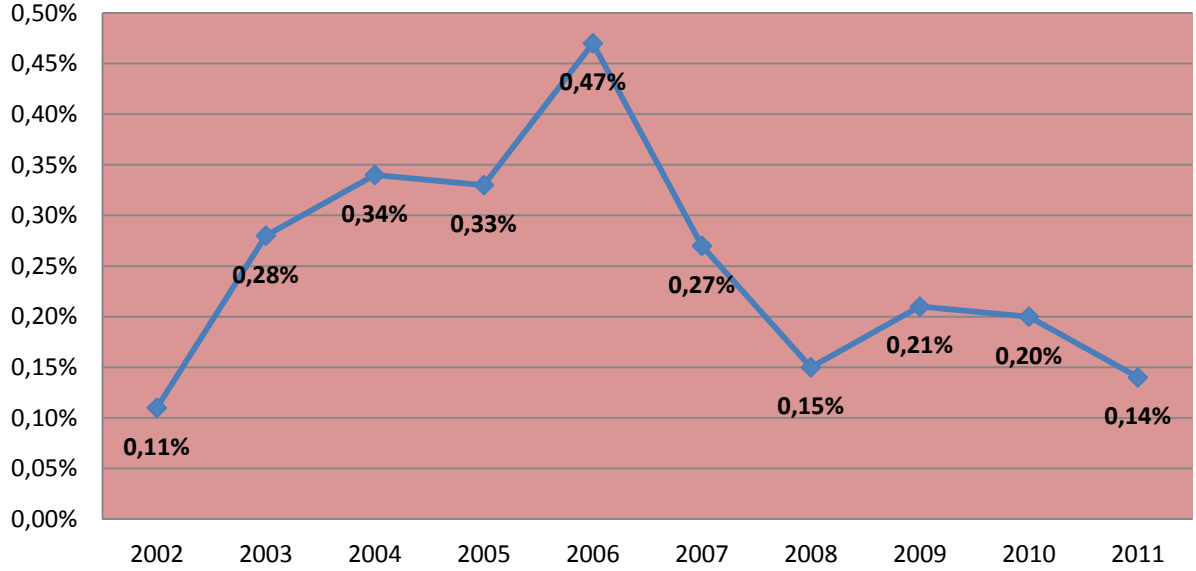


İNEGÖL'ÜN DIŞ TİCARETİNDE SON 10 YIL

2002 - 2011 İNEGÖL'ÜN TÜRKİYE İHRACATINDAKİ PAYI



2002 - 2011 İNEGÖL'ÜN TÜRKİYE İTHALATINDAKİ PAYI

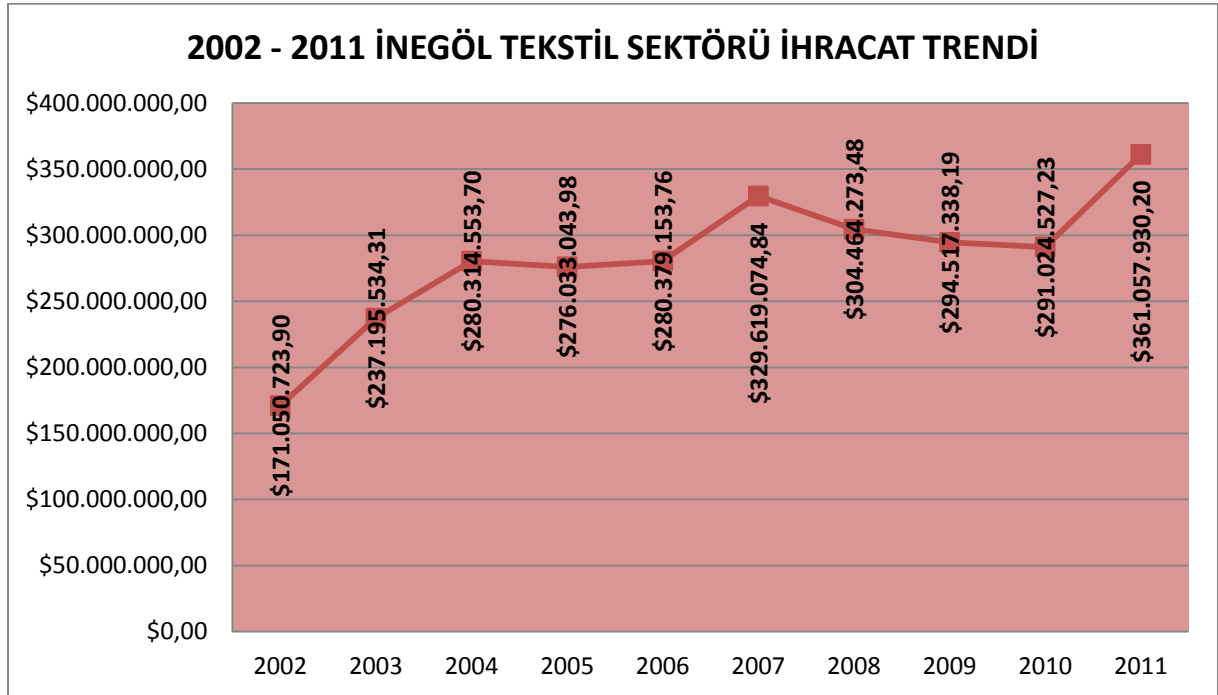


SEKTÖREL ANALİZLER

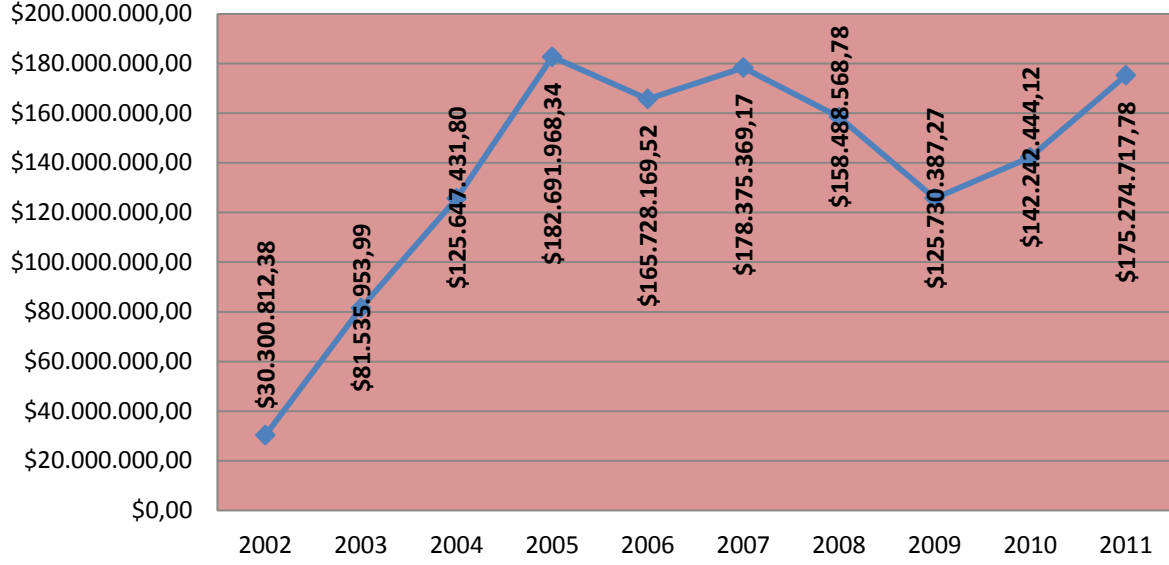
TEKSTİL SEKTÖRÜ

2002 - 2011 İNEGÖL'ÜN TEKSTİL SEKTÖRÜ DIŞ TİCARET RAKAMLARI

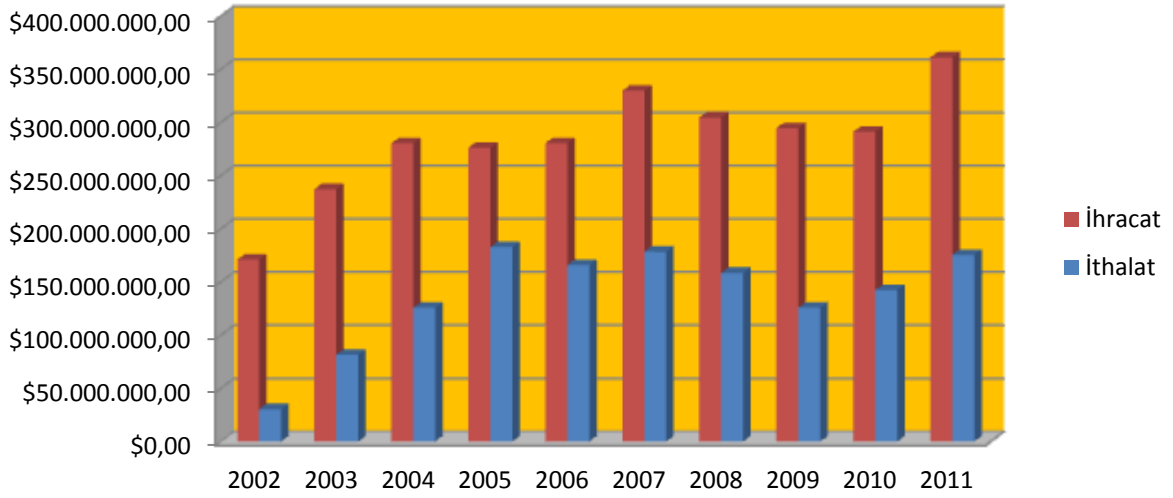
YIL	İHRACAT \$	İTHALAT \$	DIŞ TİCARET HACMİ \$	CARİ FAZLA \$
2011	\$361.057.930,20	\$175.274.717,78	\$536.332.647,98	\$185.783.212,42
2010	\$291.024.527,23	\$142.242.444,12	\$433.266.971,35	\$148.782.083,11
2009	\$294.517.338,19	\$125.730.387,27	\$420.247.725,46	\$168.786.950,92
2008	\$304.464.273,48	\$158.488.568,78	\$462.952.842,26	\$145.975.704,70
2007	\$329.619.074,84	\$178.375.369,17	\$507.994.444,01	\$151.243.705,67
2006	\$280.379.153,76	\$165.728.169,52	\$446.107.323,28	\$114.650.984,24
2005	\$276.033.043,98	\$182.691.968,34	\$458.725.012,32	\$93.341.075,64
2004	\$280.314.553,70	\$125.647.431,80	\$405.961.985,50	\$154.667.121,90
2003	\$237.195.534,31	\$81.535.953,99	\$318.731.488,30	\$155.659.580,32
2002	\$171.050.723,90	\$30.300.812,38	\$201.351.536,28	\$140.749.911,52
10 YIL TOPLAM	\$2.825.656.153,59	\$1.366.015.823,15	\$4.191.671.976,74	\$1.459.640.330,44



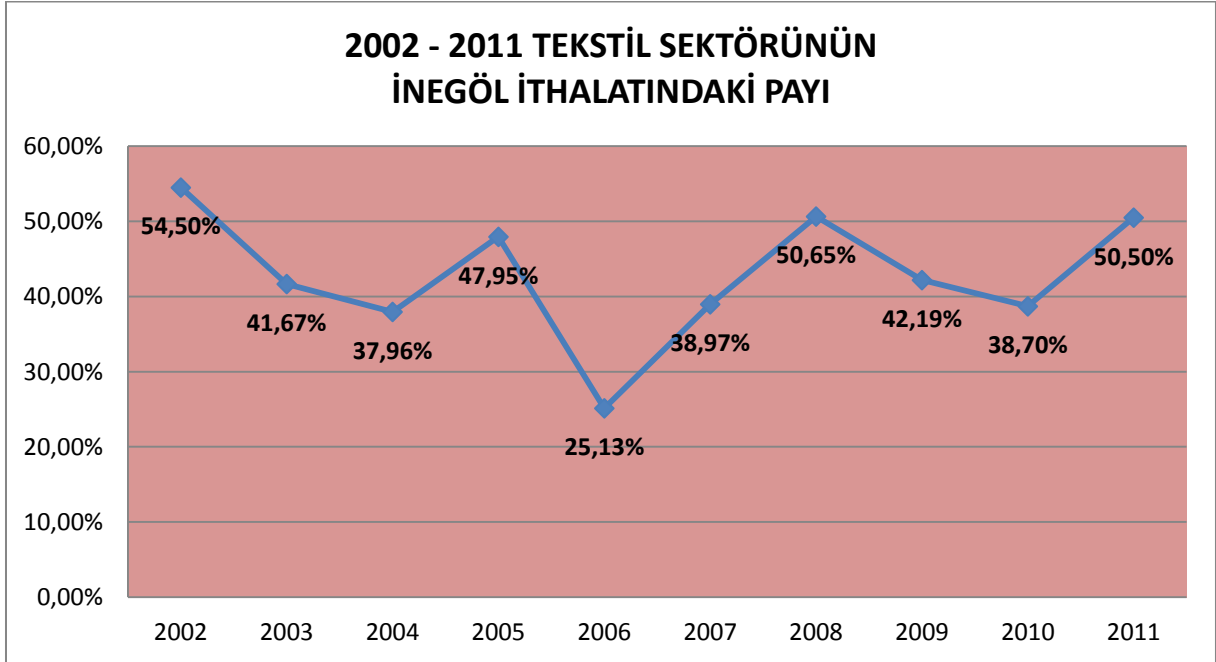
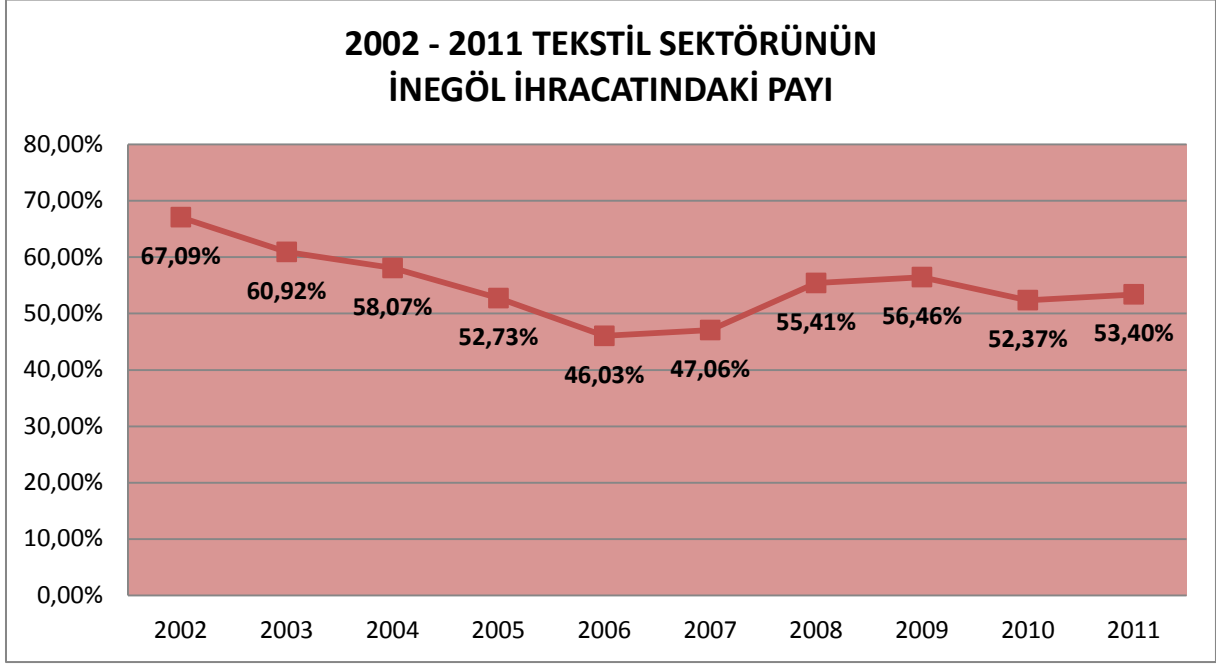
2002 - 2011 İNEGÖL TEKSTİL SEKTÖRÜ İTHALAT TRENDİ



2002 - 2011 İNEGÖL TEKSTİL SEKTÖRÜ İHRACAT - İTHALAT KARŞILAŞTIRMASI

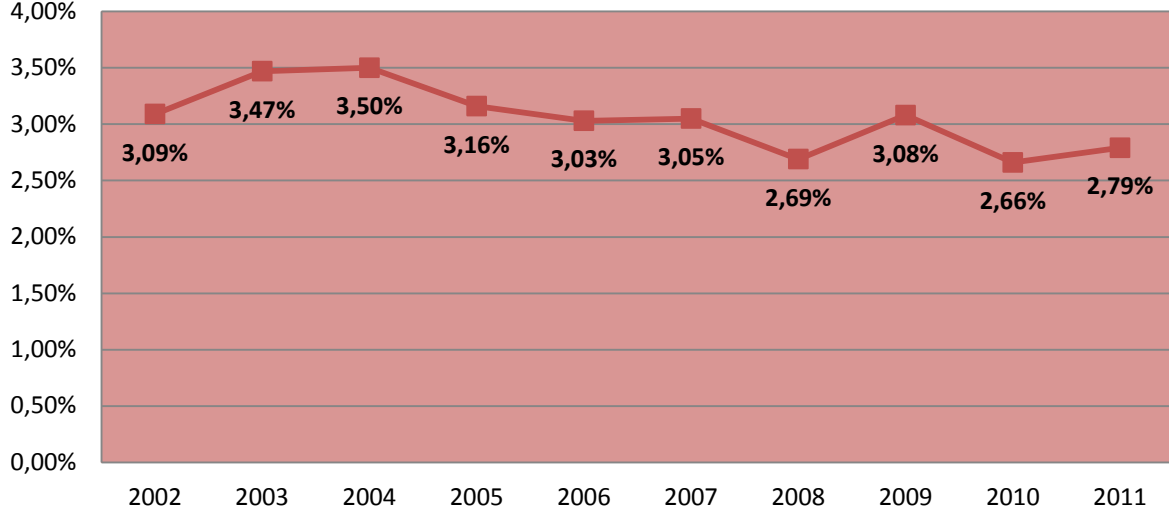


İNEGÖL'ÜN DIŞ TİCARETİNDE SON 10 YIL

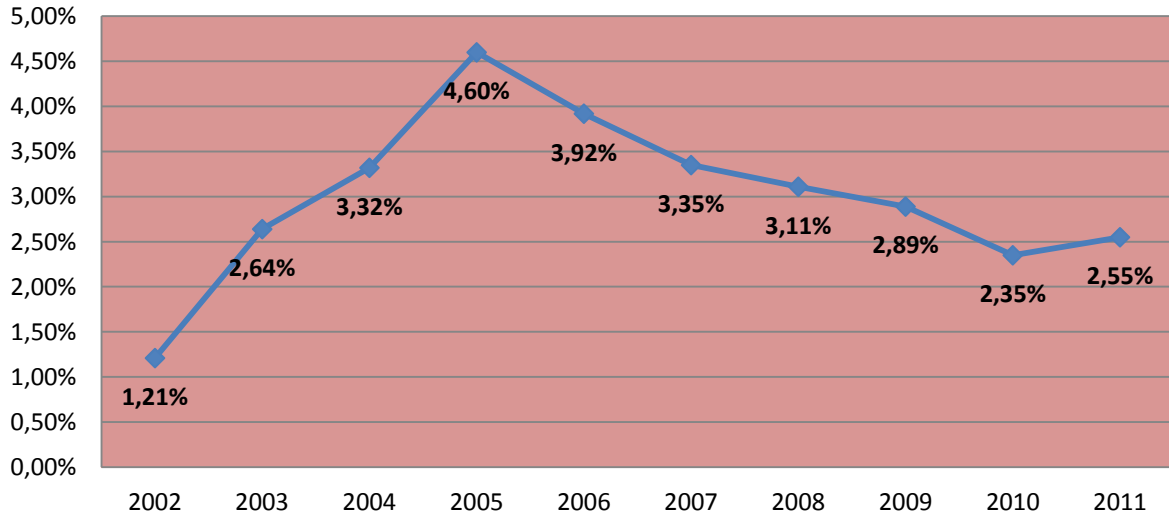


İNEGÖL'ÜN DIŞ TİCARETİNDE SON 10 YIL

**2002 - 2011 İNEGÖL TEKSTİL SEKTÖRÜNÜN
TÜRKİYE TEKSTİL İHRACATINDAKİ PAYI**



**2002 - 2011 İNEGÖL TEKSTİL SEKTÖRÜNÜN
TÜRKİYE TEKSTİL İTHALATINDAKİ PAYI**



İNEGÖL'ÜN DIŞ TİCARETİNDE SON 10 YIL

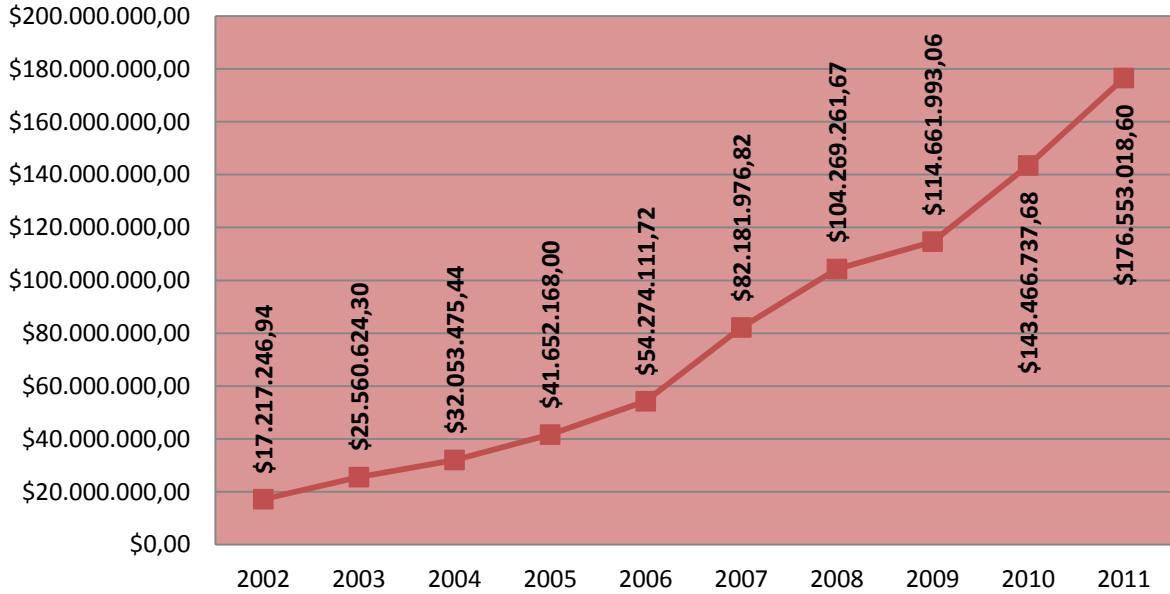
MOBİLYA SEKTÖRÜ

2002 - 2011 İNEGÖL'ÜN MOBİLYA SEKTÖRÜ

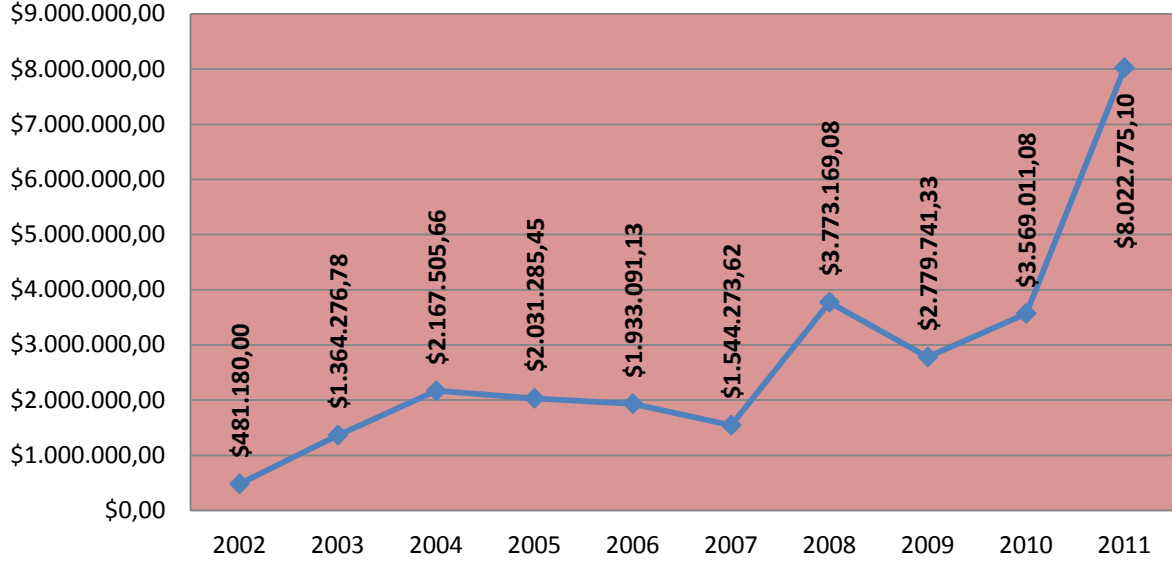
DIŞ TİCARET RAKAMLARI

YIL	İHRACAT \$	İTHALAT \$	DIŞ TİCARET HACMİ \$	CARİ FAZLA \$
2011	\$176.553.018,60	\$8.022.775,10	\$184.575.793,70	\$168.530.243,50
2010	\$143.466.737,68	\$3.569.011,08	\$147.035.748,76	\$139.897.726,60
2009	\$114.661.993,06	\$2.779.741,33	\$117.441.734,39	\$111.882.251,73
2008	\$104.269.261,67	\$3.773.169,08	\$108.042.430,75	\$100.496.092,59
2007	\$82.181.976,82	\$1.544.273,62	\$83.726.250,44	\$80.637.703,20
2006	\$54.274.111,72	\$1.933.091,13	\$56.207.202,85	\$52.341.020,59
2005	\$41.652.168,00	\$2.031.285,45	\$43.683.453,45	\$39.620.882,55
2004	\$32.053.475,44	\$2.167.505,66	\$34.220.981,10	\$29.885.969,78
2003	\$25.560.624,30	\$1.364.276,78	\$26.924.901,08	\$24.196.347,52
2002	\$17.217.246,94	\$481.180,00	\$17.698.426,94	\$16.736.066,94
10 YIL TOPLAM	\$791.890.614,23	\$27.666.309,23	\$819.556.923,46	\$764.224.305,00

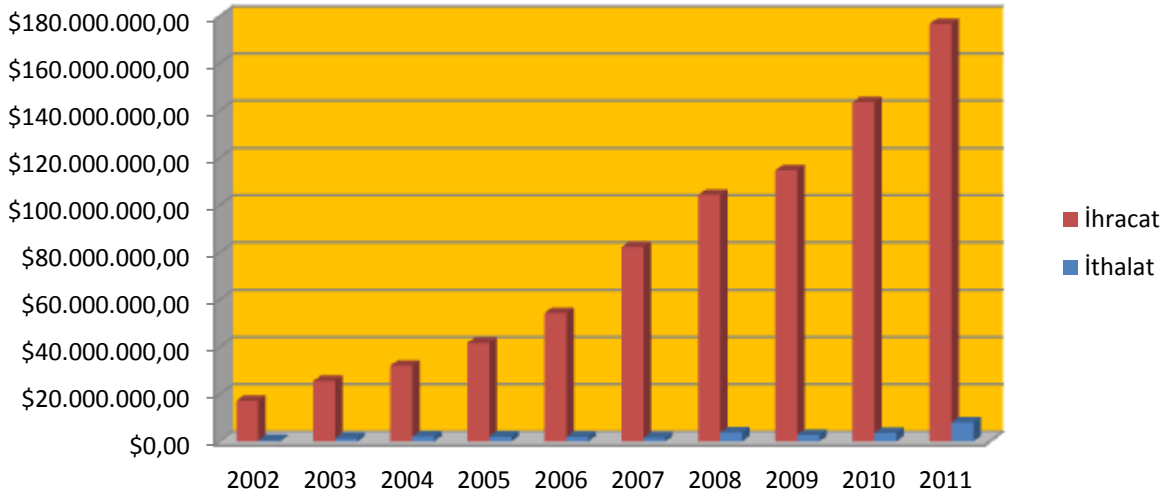
2002 - 2011 İNEGÖL MOBİLYA SEKTÖRÜ İHRACAT TRENDİ

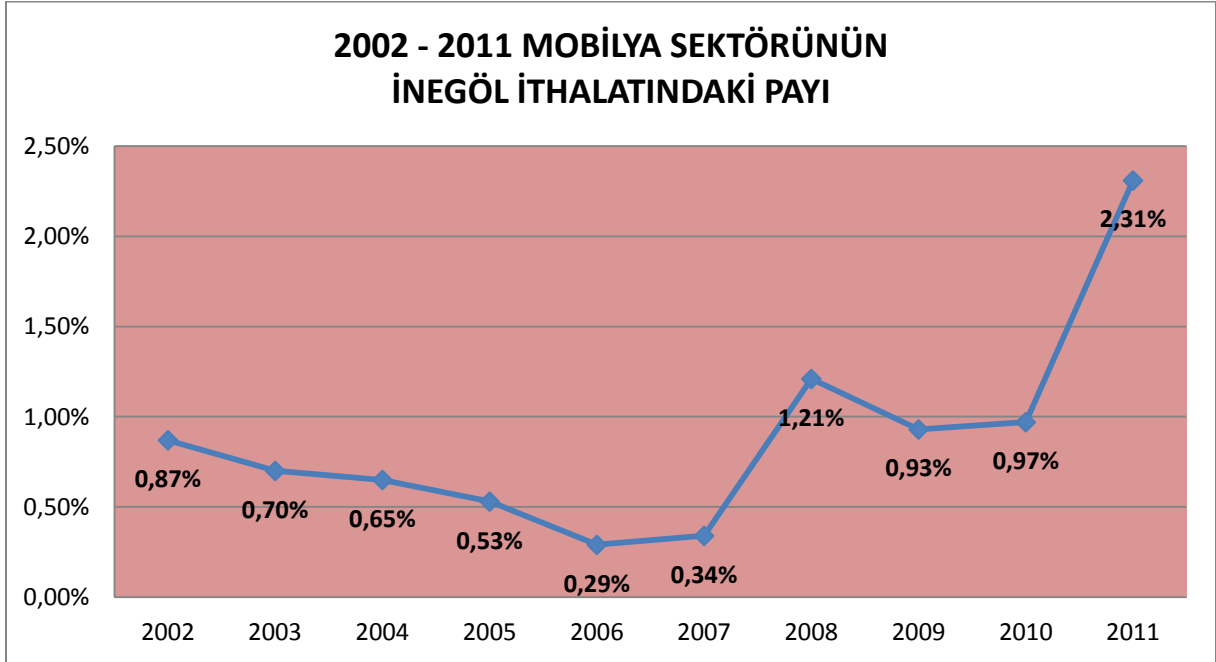
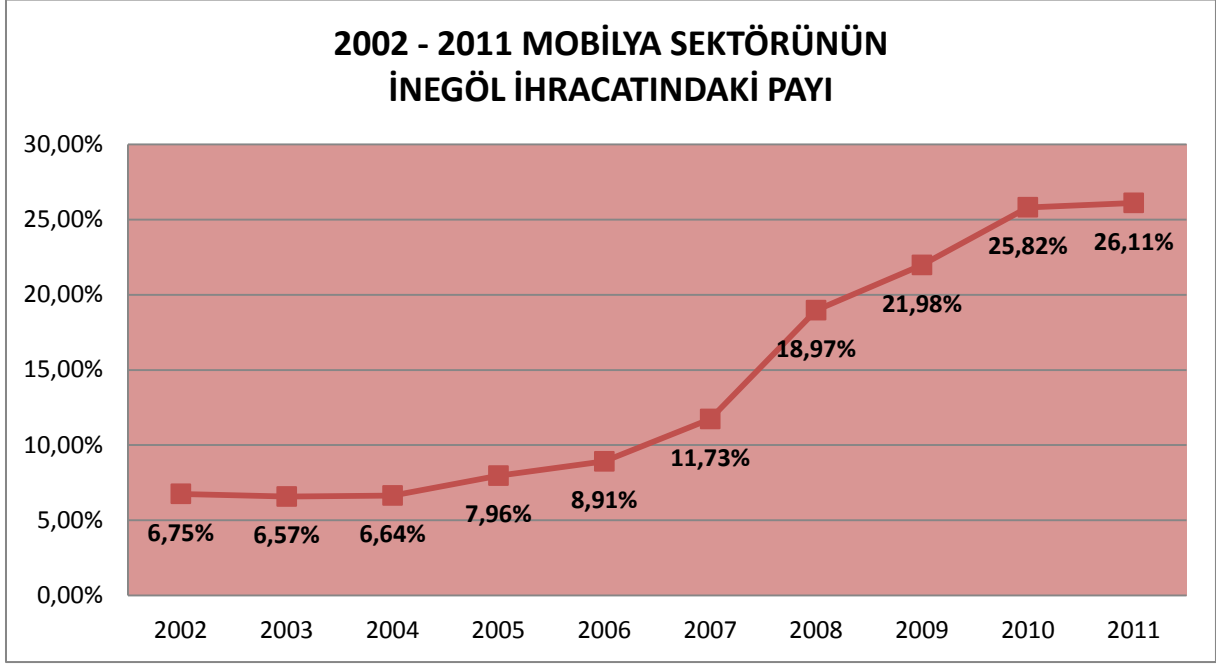


2002 - 2011 İNEGÖL MOBİLYA SEKTÖRÜ İTHALAT TRENDİ

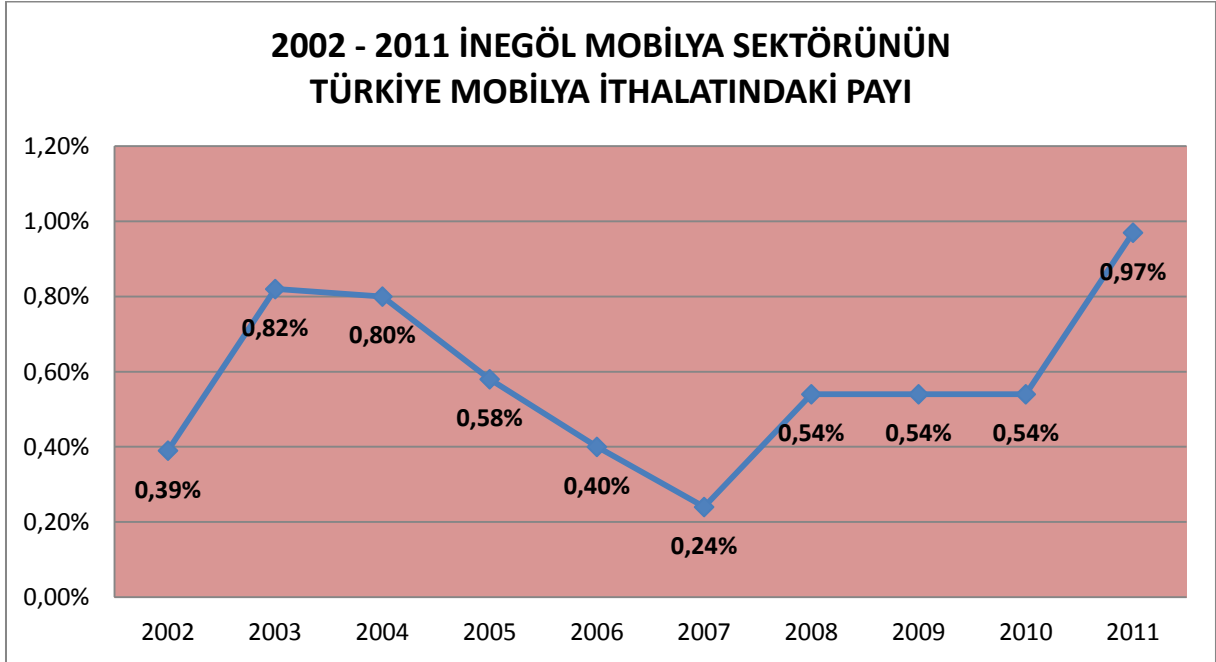
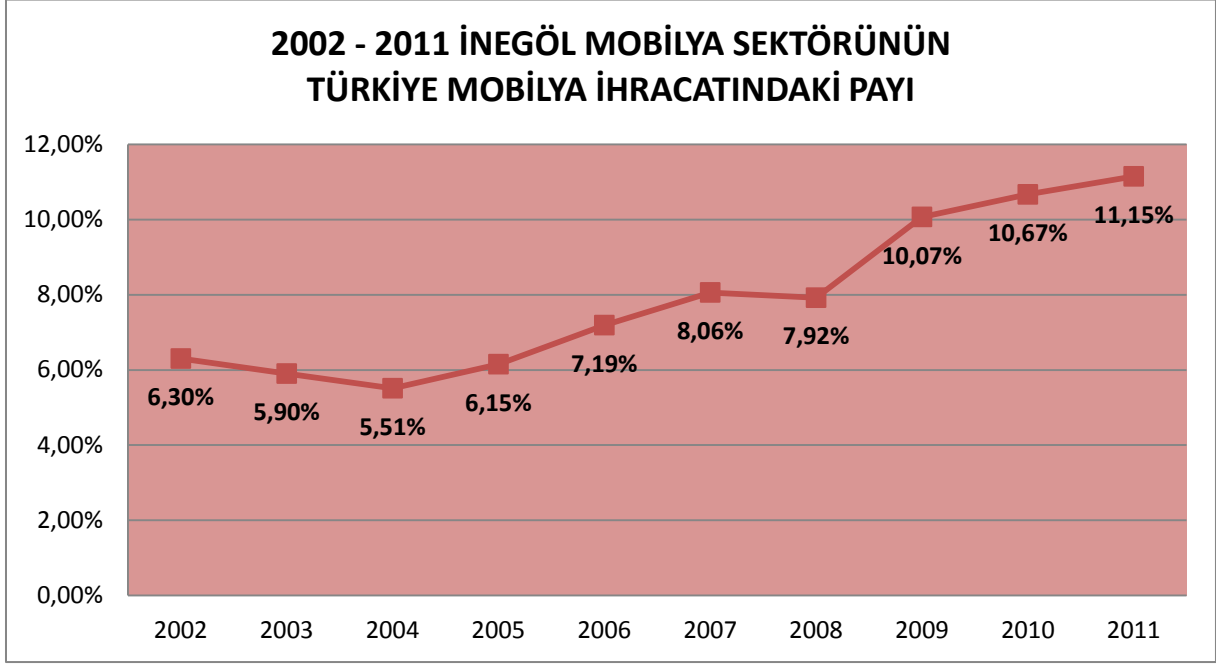


2002 - 2011 İNEGÖL MOBİLYA SEKTÖRÜ İHRACAT - İTHALAT KARŞILAŞTIRMASI





İNEGÖL'ÜN DIŞ TİCARETİNDE SON 10 YIL

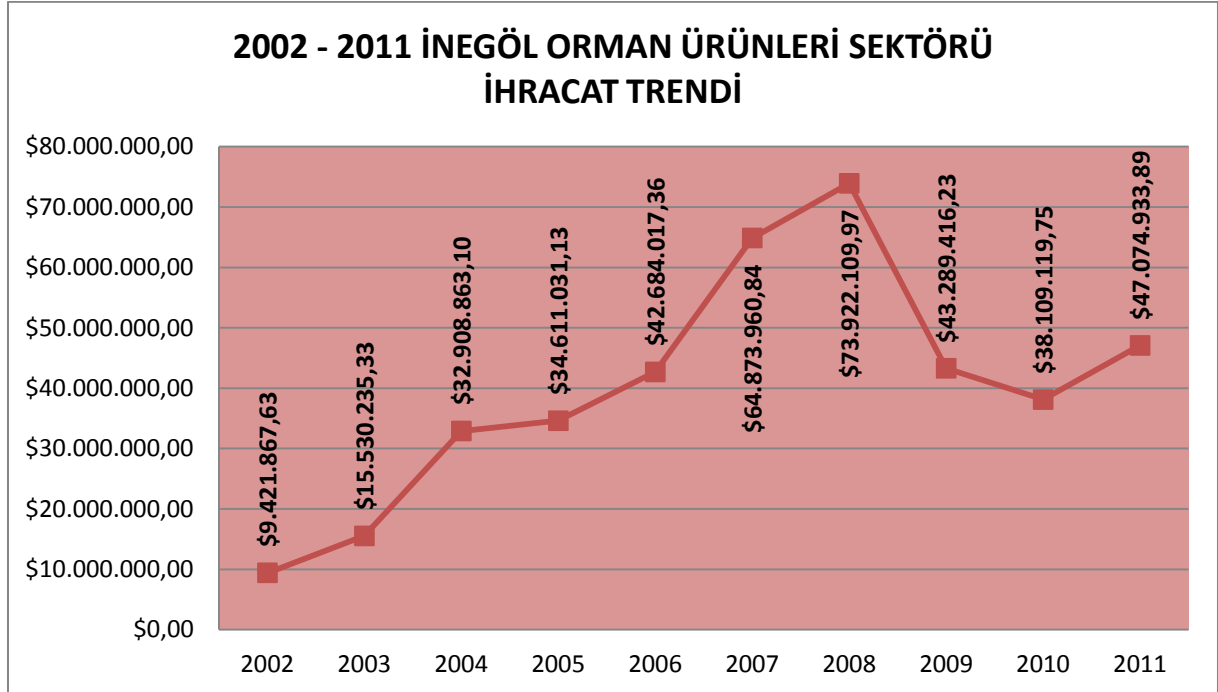


ORMAN ÜRÜNLERİ SEKTÖRÜ

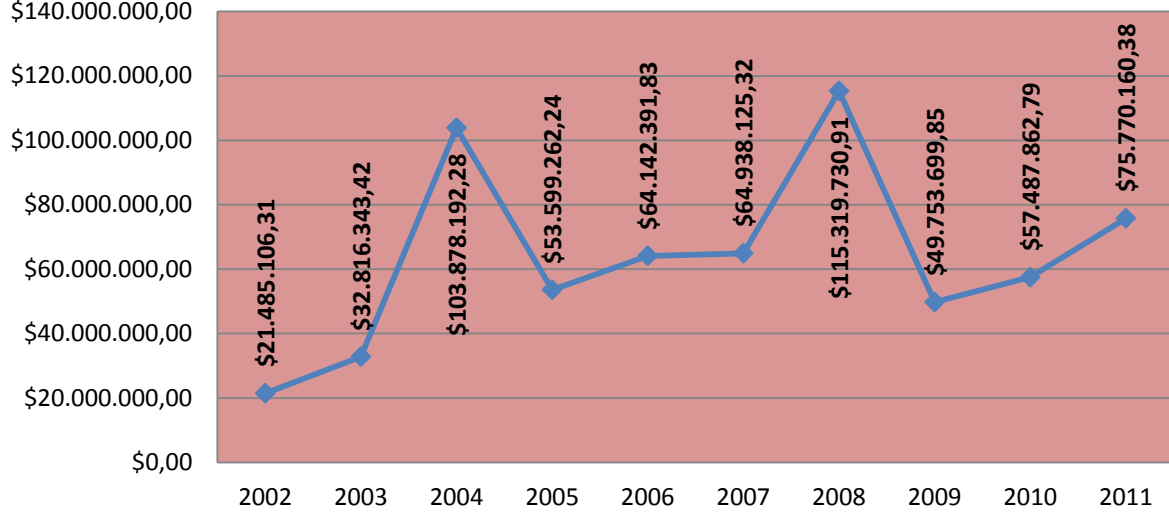
2002 - 2011 İNEGÖL'ÜN ORMAN ÜRÜNLERİ SEKTÖRÜ

DIŞ TİCARET RAKAMLARI

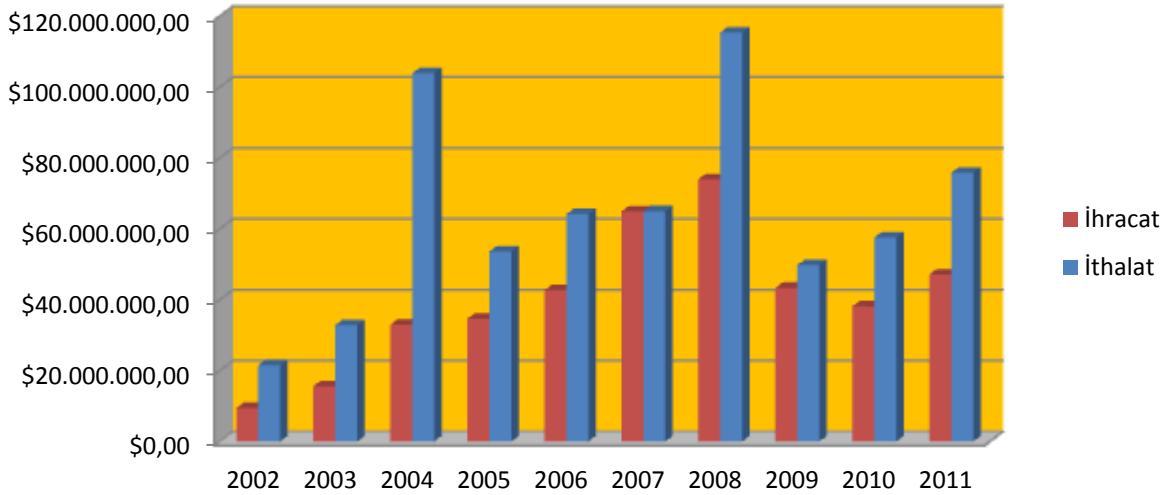
YIL	İHRACAT \$	İTHALAT \$	DIŞ TİCARET HACMİ \$	CARİ FAZLA \$
2011	\$47.074.933,89	\$75.770.160,38	\$122.845.094,27	-\$28.695.226,49
2010	\$38.109.119,75	\$57.487.862,79	\$95.596.982,54	-\$19.378.743,04
2009	\$43.289.416,23	\$49.753.699,85	\$93.043.116,08	-\$6.464.283,62
2008	\$73.922.109,97	\$115.319.730,91	\$189.241.840,88	-\$41.397.620,94
2007	\$64.873.960,84	\$64.938.125,32	\$129.812.086,16	-\$64.164,48
2006	\$42.684.017,36	\$64.142.391,83	\$106.826.409,19	-\$21.458.374,47
2005	\$34.611.031,13	\$53.599.262,24	\$88.210.293,37	-\$18.988.231,11
2004	\$32.908.863,10	\$103.878.192,28	\$136.787.055,38	-\$70.969.329,18
2003	\$15.530.235,33	\$32.816.343,42	\$48.346.578,75	-\$17.286.108,09
2002	\$9.421.867,63	\$21.485.106,31	\$30.906.973,94	-\$12.063.238,68
10 YIL TOPLAM	\$402.425.555,23	\$639.190.875,33	\$1.041.616.430,56	-\$236.765.320,10



2002 - 2011 İNEGÖL ORMAN ÜRÜNLERİ SEKTÖRÜ İTHALAT TRENDİ

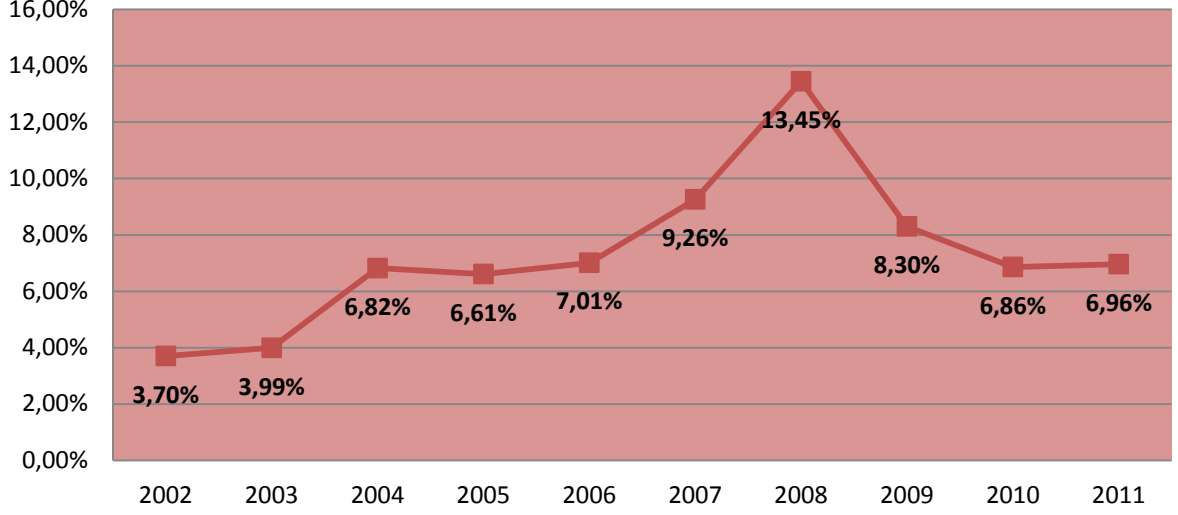


2002 - 2011 İNEGÖL ORMAN ÜRÜNLERİ SEKTÖRÜ İHRACAT - İTHALAT KARŞILAŞTIRMASI

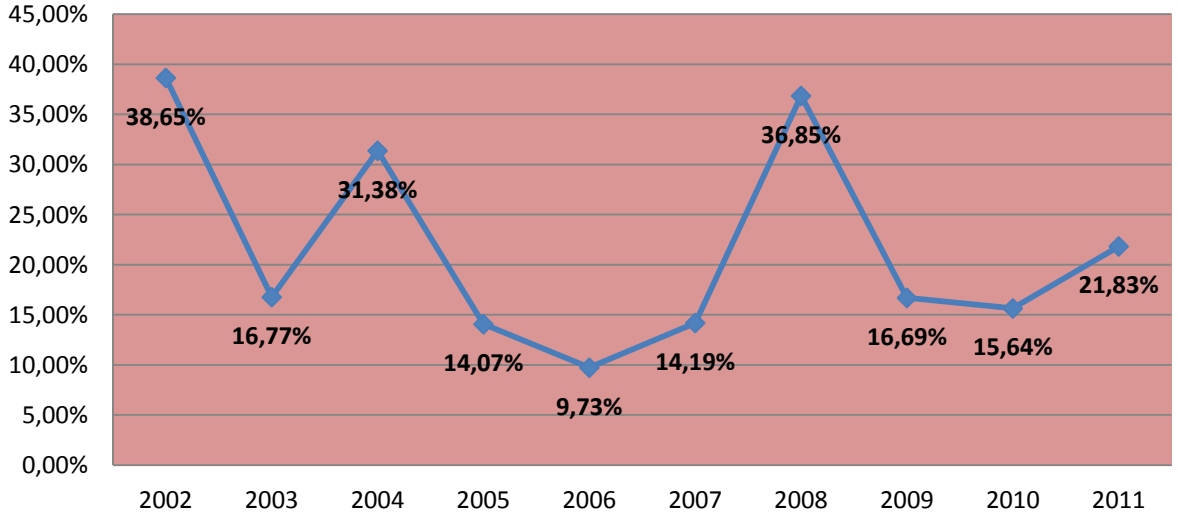


İNEGÖL'ÜN DIŞ TİCARETİNDE SON 10 YIL

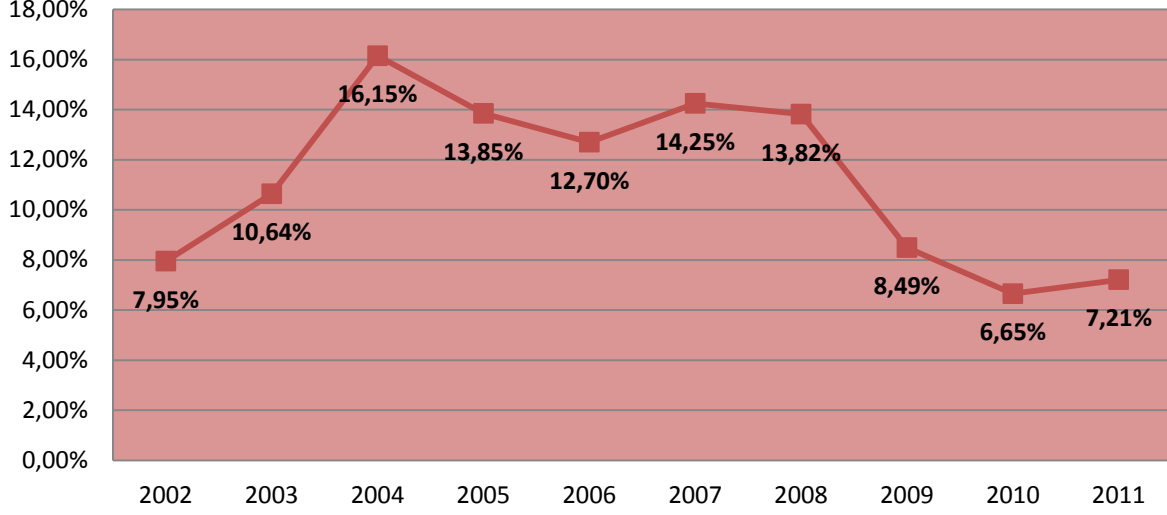
2002 - 2011 ORMAN ÜRÜNLERİ SEKTÖRÜNÜN
İNEGÖL İHRACATINDAKİ PAYI



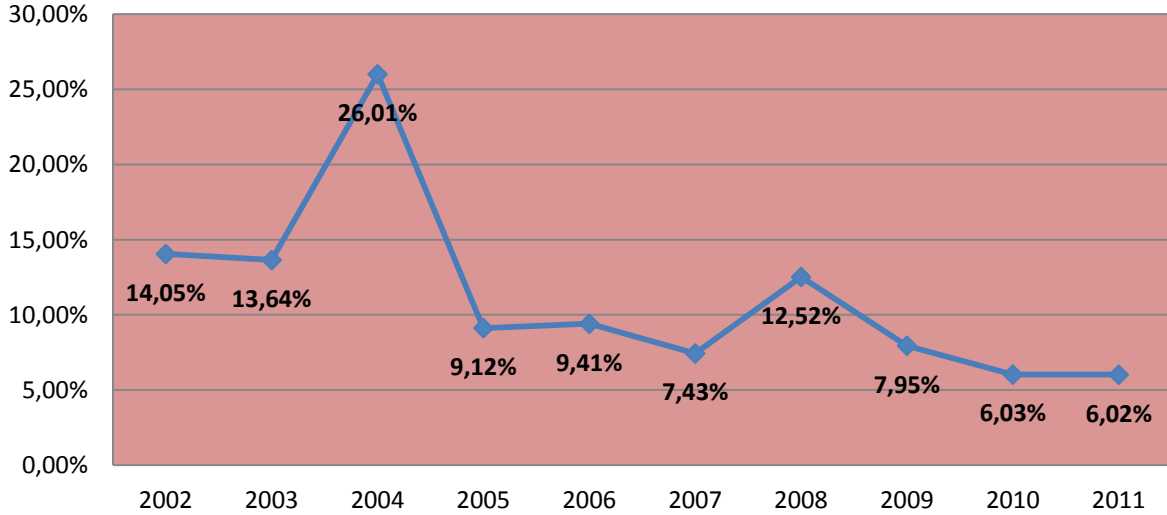
2002 - 2011 ORMAN ÜRÜNLERİ SEKTÖRÜNÜN
İNEGÖL İTHALATINDAKİ PAYI



2002 - 2011 İNEGÖL ORMAN ÜRÜNLERİ SEKTÖRÜNÜN TÜRKİYE ORMAN ÜRÜNLERİ İHRACATINDAKİ PAYI



2002 - 2011 İNEGÖL ORMAN ÜRÜNLERİ SEKTÖRÜNÜN TÜRKİYE ORMAN ÜRÜNLERİ İTHALATINDAKİ PAYI



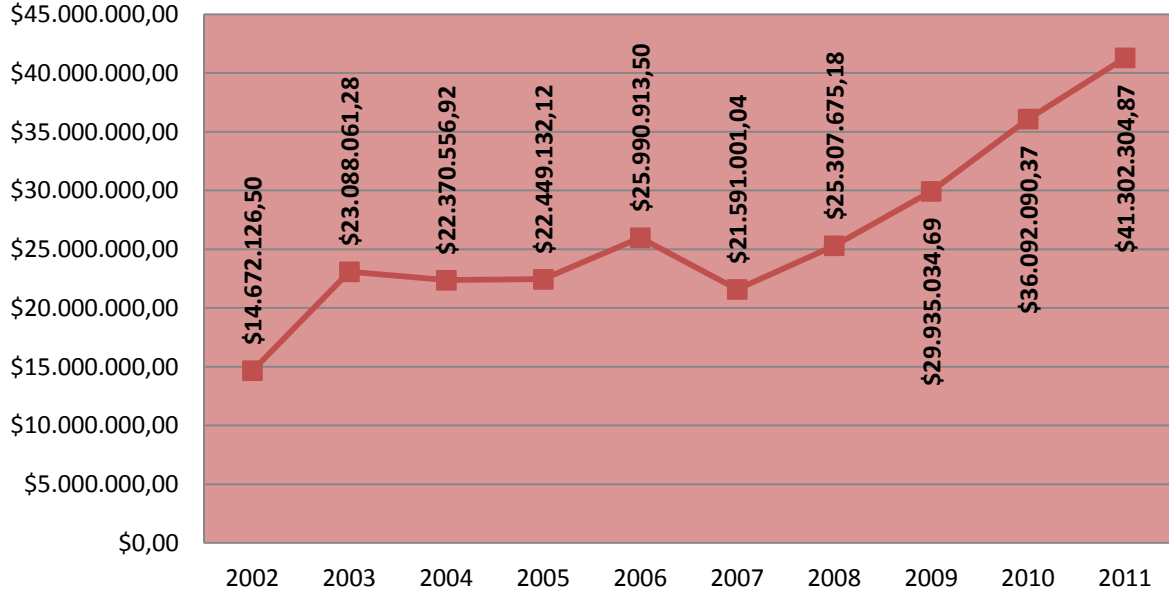
İNEGÖL'ÜN DIŞ TİCARETİNDE SON 10 YIL

GIDA SEKTÖRÜ

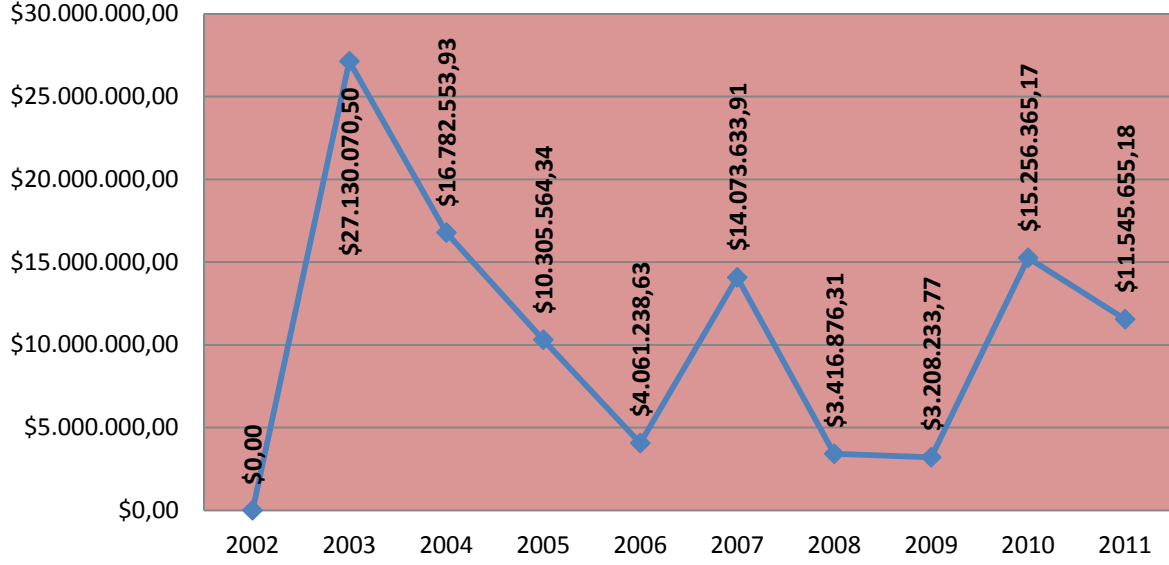
2002 - 2011 İNEGÖL'ÜN GIDA SEKTÖRÜ DIŞ TİCARET RAKAMLARI

YIL	İHRACAT \$	İTHALAT \$	DIŞ TİCARET HACMİ \$	CARİ FAZLA \$
2011	\$41.302.304,87	\$11.545.655,18	\$52.847.960,05	\$29.756.649,69
2010	\$36.092.090,37	\$15.256.365,17	\$51.348.455,54	\$20.835.725,20
2009	\$29.935.034,69	\$3.208.233,77	\$33.143.268,46	\$26.726.800,92
2008	\$25.307.675,18	\$3.416.876,31	\$28.724.551,49	\$21.890.798,87
2007	\$21.591.001,04	\$14.073.633,91	\$35.664.634,95	\$7.517.367,13
2006	\$25.990.913,50	\$4.061.238,63	\$30.052.152,13	\$21.929.674,87
2005	\$22.449.132,12	\$10.305.564,34	\$32.754.696,46	\$12.143.567,78
2004	\$22.370.556,92	\$16.782.553,93	\$39.153.110,85	\$5.588.002,99
2003	\$23.088.061,28	\$27.130.070,50	\$50.218.131,78	-\$4.042.009,22
2002	\$14.672.126,50	\$0,00	\$14.672.126,50	\$14.672.126,50
10 YIL TOPLAM	\$262.798.896,47	\$105.780.191,74	\$368.579.088,21	\$157.018.704,73

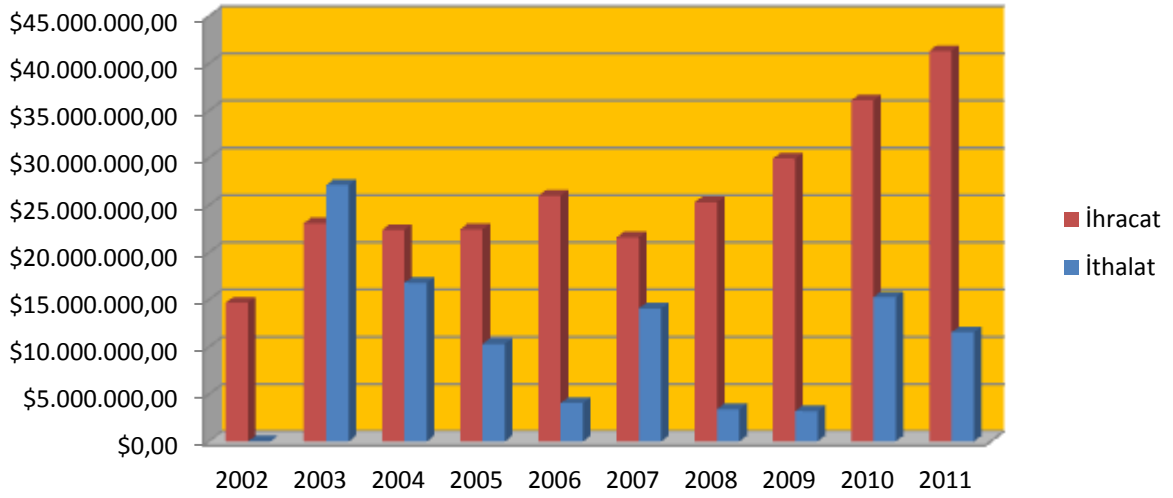
2002 - 2011 İNEGÖL GIDA SEKTÖRÜ İHRACAT TRENDİ



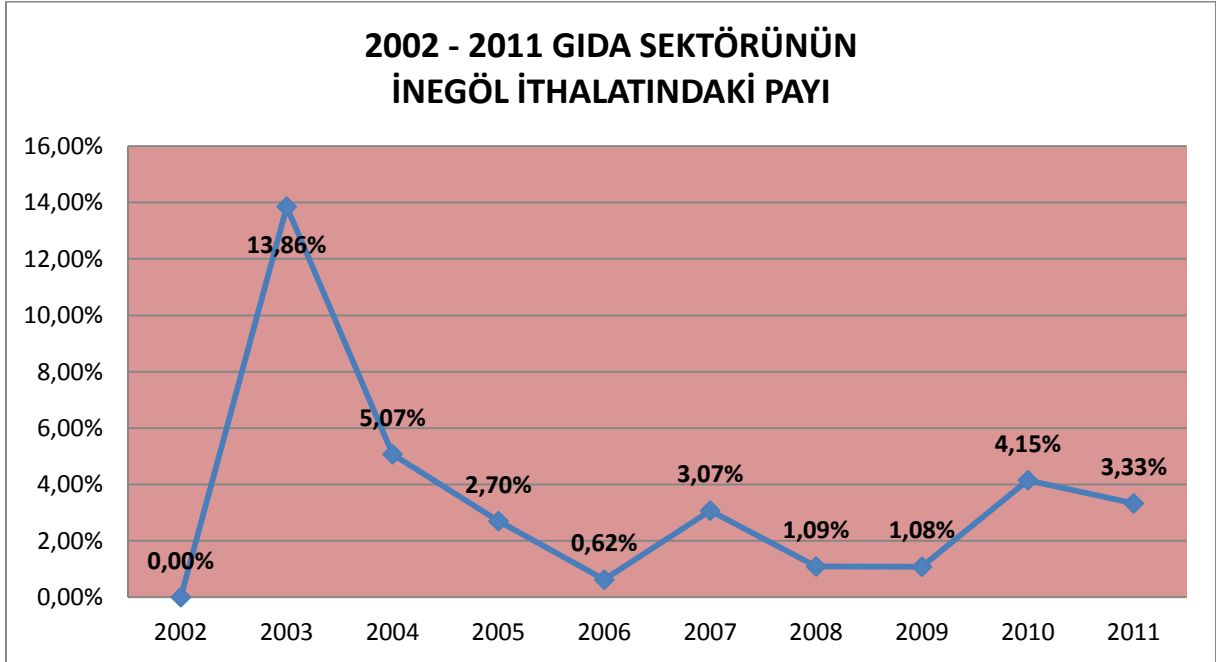
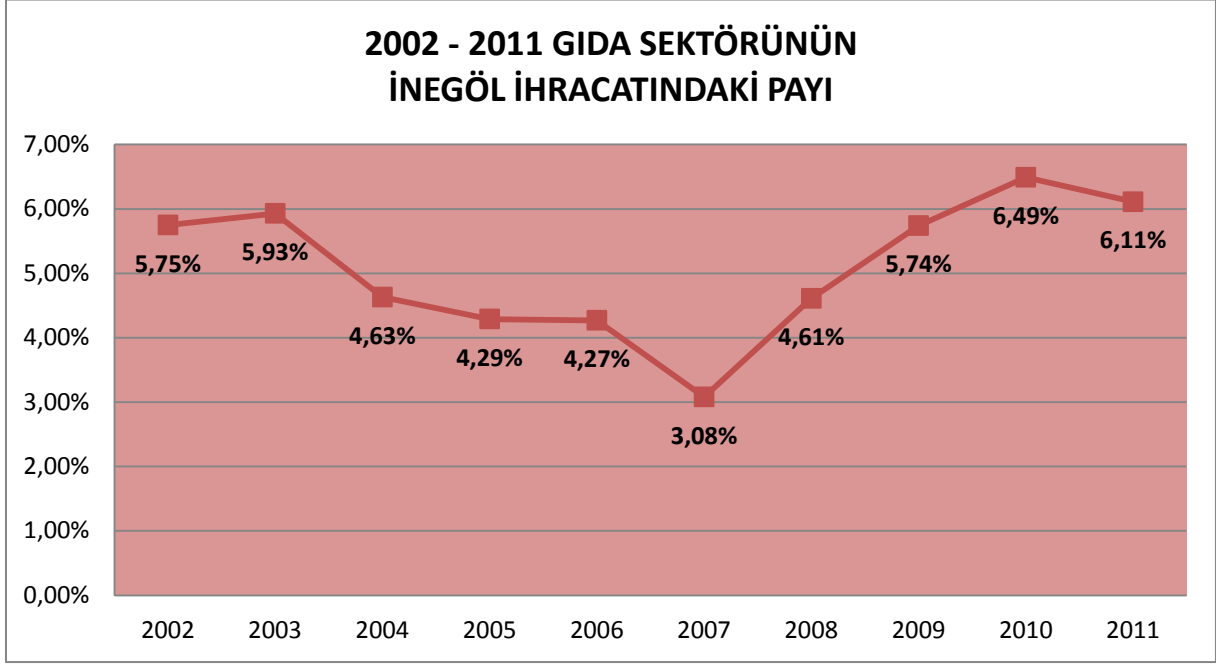
2002 - 2011 İNEGÖL GIDA SEKTÖRÜ İTHALAT TRENDİ



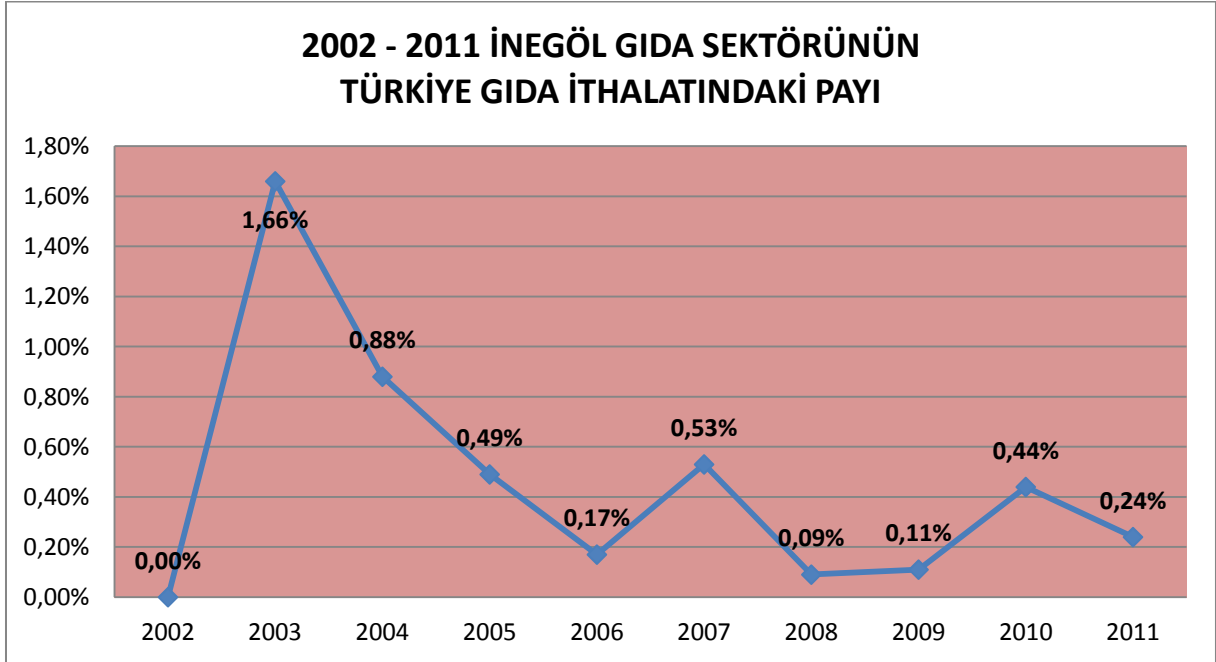
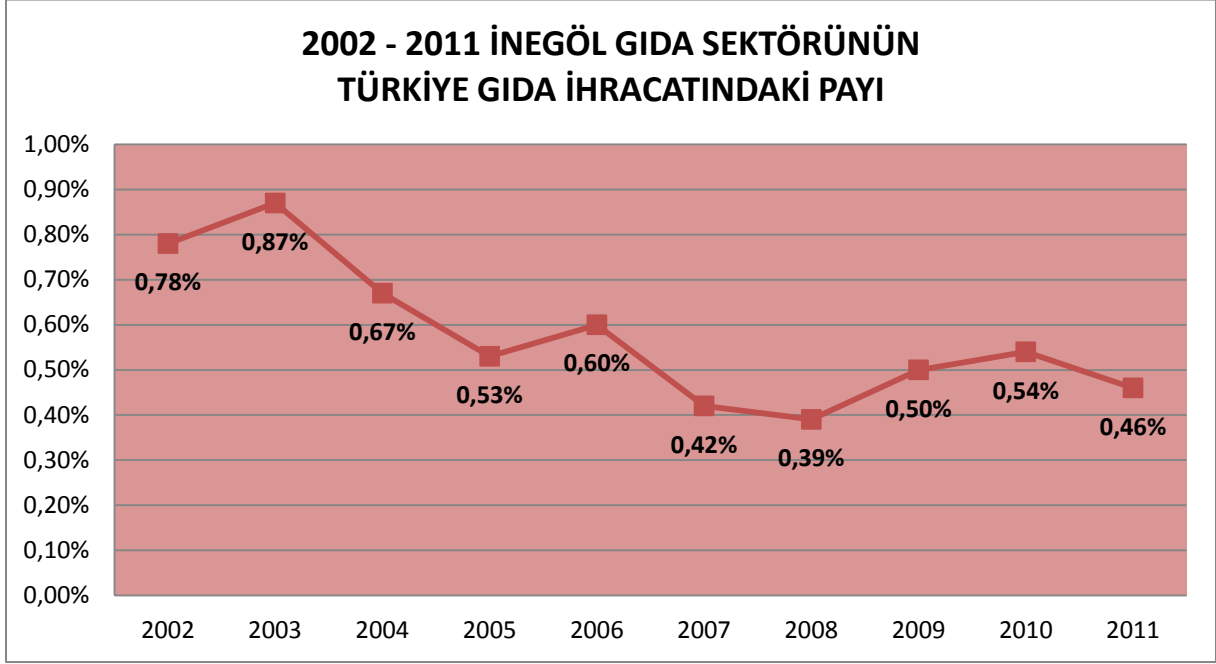
2002 - 2011 İNEGÖL GIDA SEKTÖRÜ İHRACAT - İTHALAT KARŞILAŞTIRMASI



İNEGÖL'ÜN DIŞ TİCARETİNDE SON 10 YIL



İNEGÖL'ÜN DIŞ TİCARETİNDE SON 10 YIL

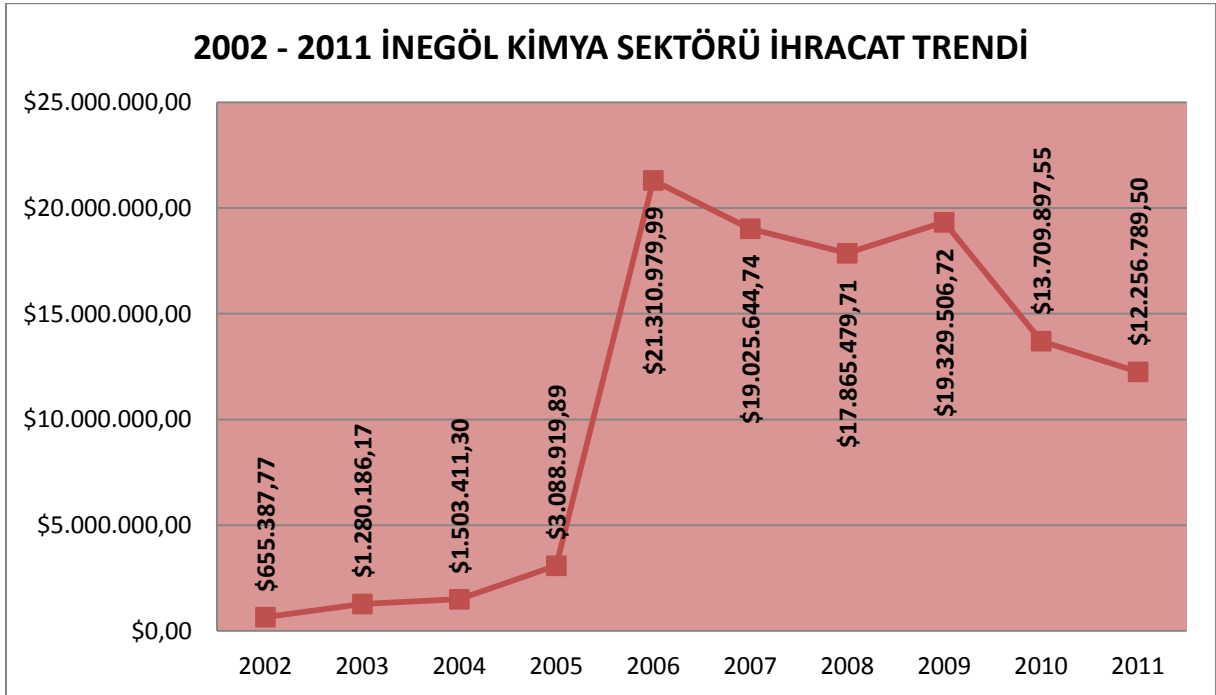


İNEGÖL'ÜN DIŞ TİCARETİNDE SON 10 YIL

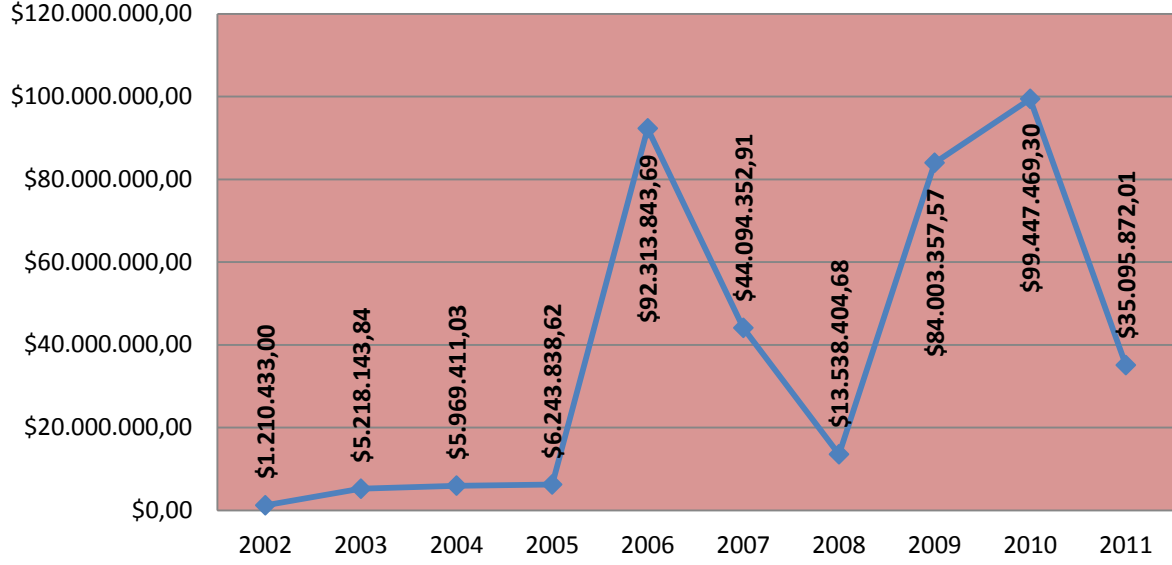
KİMYA SEKTÖRÜ

2002 - 2011 İNEGÖL'ÜN KİMYA SEKTÖRÜ DIŞ TİCARET RAKAMLARI

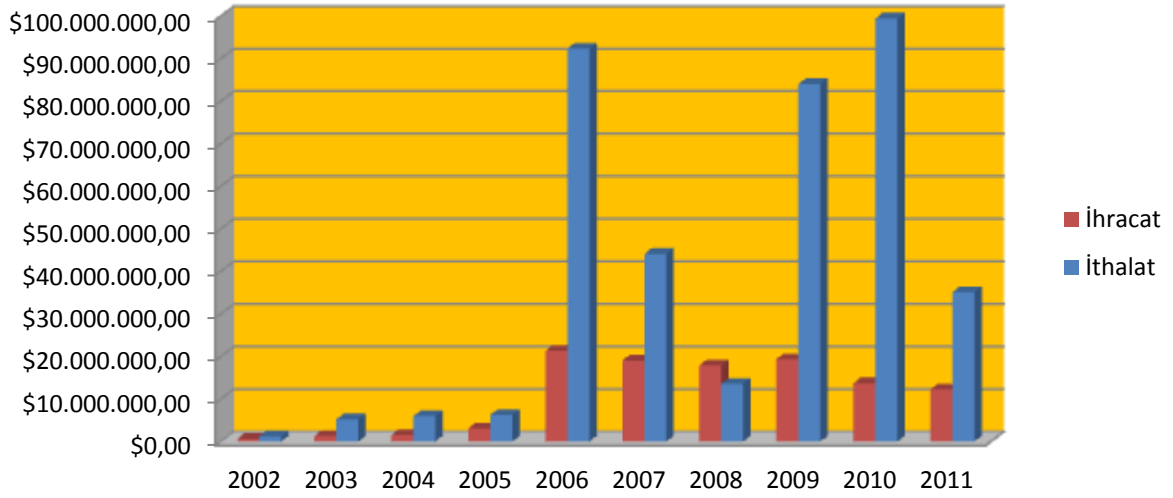
YIL	İHRACAT \$	İTHALAT \$	DIŞ TİCARET HACMİ \$	CARİ FAZLA \$
2011	\$12.256.789,50	\$35.095.872,01	\$47.352.661,51	-\$22.839.082,51
2010	\$13.709.897,55	\$99.447.469,30	\$113.157.366,85	-\$85.737.571,75
2009	\$19.329.506,72	\$84.003.357,57	\$103.332.864,29	-\$64.673.850,85
2008	\$17.865.479,71	\$13.538.404,68	\$31.403.884,39	\$4.327.075,03
2007	\$19.025.644,74	\$44.094.352,91	\$63.119.997,65	-\$25.068.708,17
2006	\$21.310.979,99	\$92.313.843,69	\$113.624.823,68	-\$71.002.863,70
2005	\$3.088.919,89	\$6.243.838,62	\$9.332.758,51	-\$3.154.918,73
2004	\$1.503.411,30	\$5.969.411,03	\$7.472.822,33	-\$4.465.999,73
2003	\$1.280.186,17	\$5.218.143,84	\$6.498.330,01	-\$3.937.957,67
2002	\$655.387,77	\$1.210.433,00	\$1.865.820,77	-\$555.045,23
10 YIL TOPLAM	\$110.026.203,34	\$387.135.126,65	\$497.161.329,99	-\$277.108.923,31



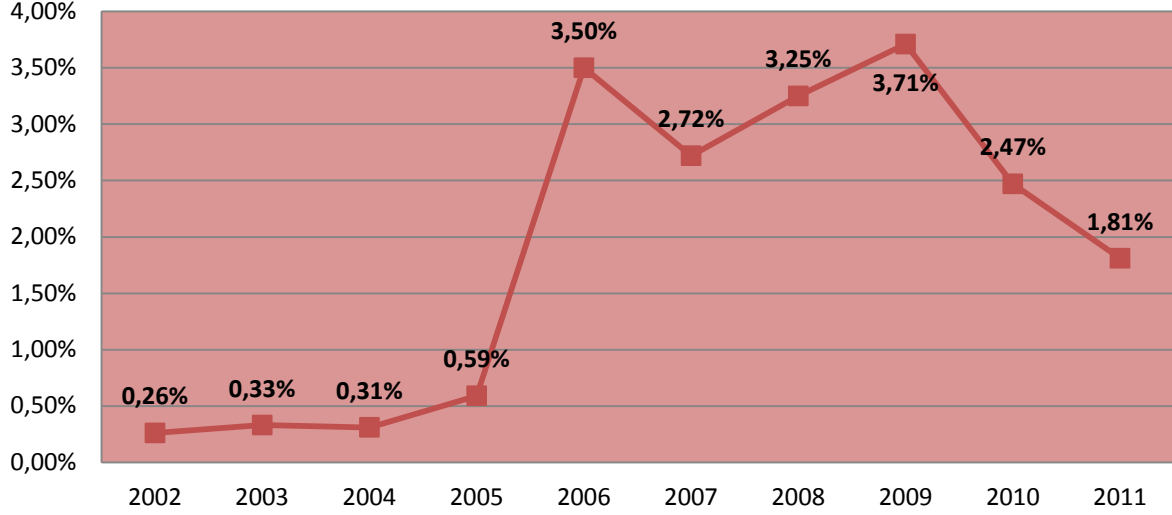
2002 - 2011 İNEGÖL KİMYA SEKTÖRÜ İTHALAT TRENDİ



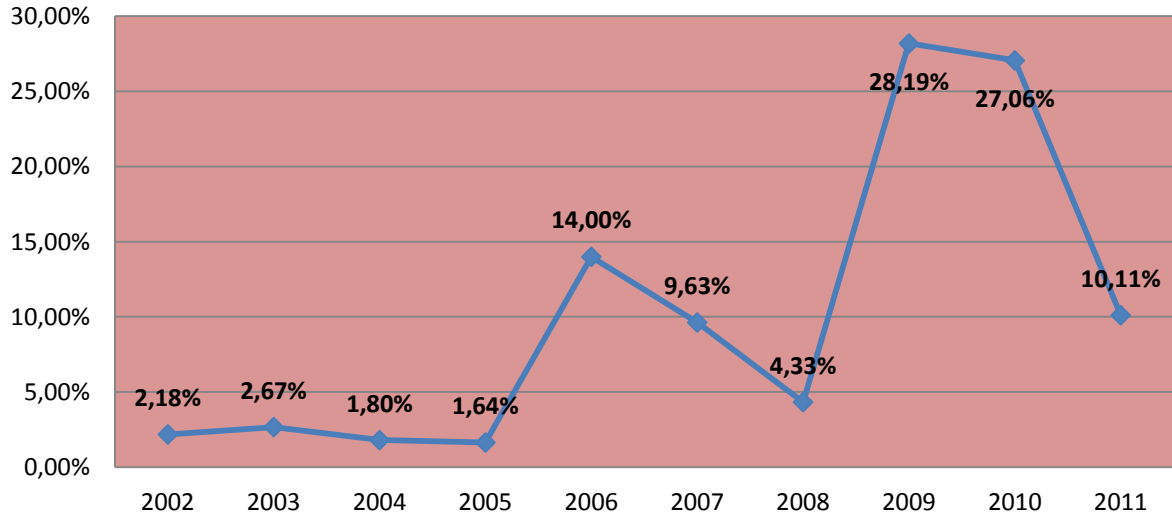
2002 - 2011 İNEGÖL KİMYA SEKTÖRÜ İHRACAT - İTHALAT KARŞILAŞTIRMASI



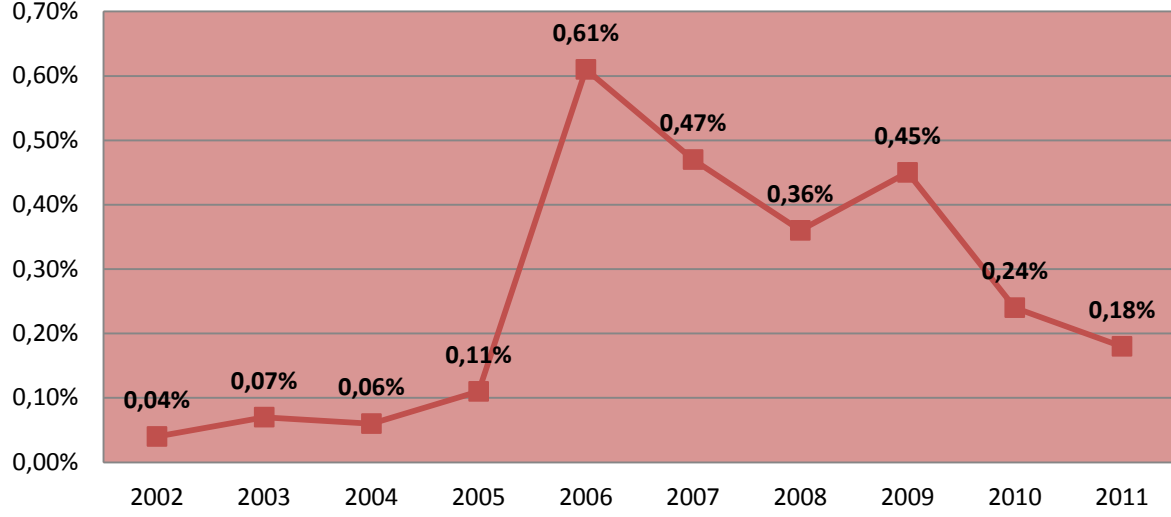
2002 - 2011 KİMYA SEKTÖRÜNÜN İNEGÖL İHRACATINDAKİ PAYI



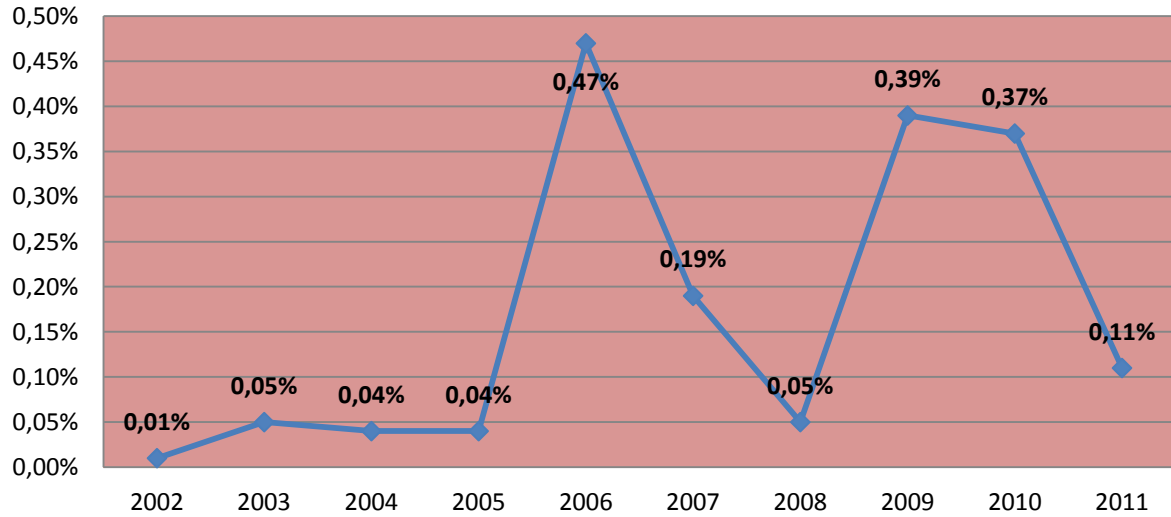
2002 - 2011 KİMYA SEKTÖRÜNÜN İNEGÖL İTHALATINDAKİ PAYI



2002 - 2011 İNEGÖL KİMYA SEKTÖRÜNÜN TÜRKİYE KİMYA İHRACATINDAKİ PAYI



2002 - 2011 İNEGÖL KİMYA SEKTÖRÜNÜN TÜRKİYE KİMYA İTHALATINDAKİ PAYI



İNEGÖL'ÜN DIŞ TİCARETİNDE SON 10 YIL

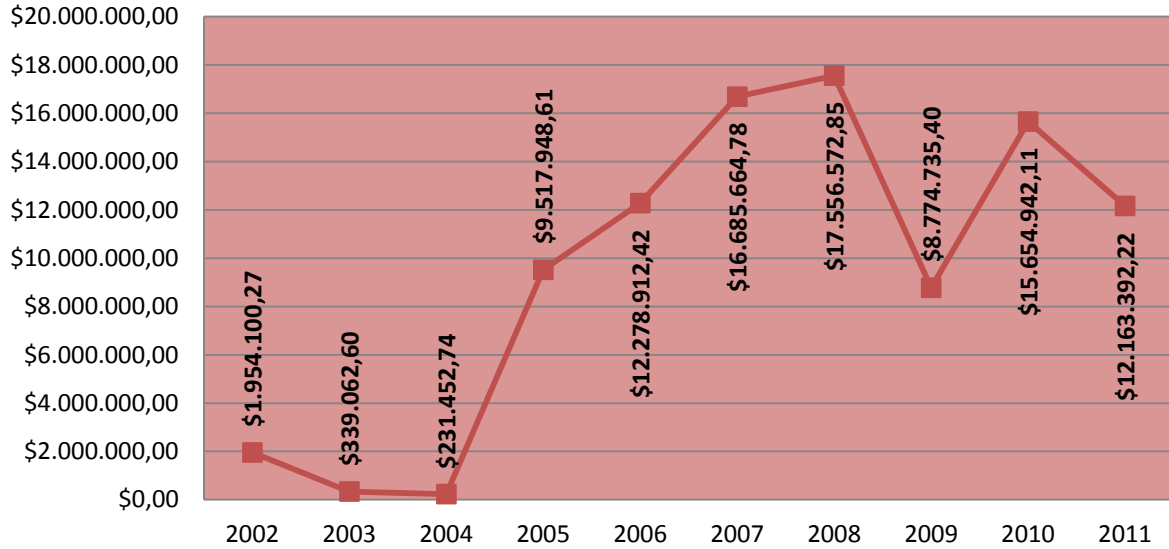
OTOMOTİV YAN SANAYİ SEKTÖRÜ

2002 - 2011 İNEGÖL'ÜN OTOMOTİV YAN SANAYİ SEKTÖRÜ

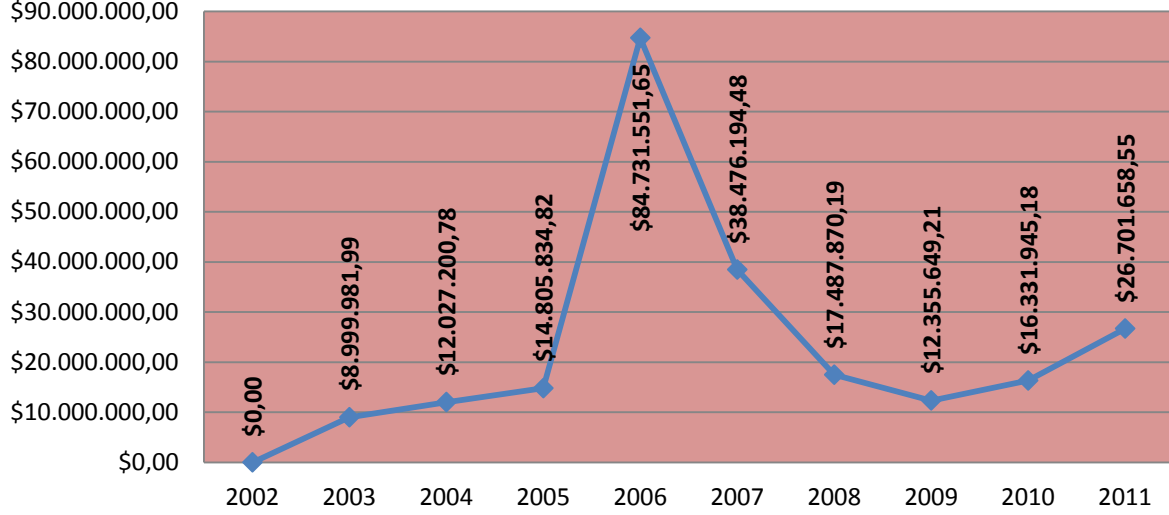
DIŞ TİCARET RAKAMLARI

YIL	İHRACAT \$	İTHALAT \$	DIŞ TİCARET HACMİ \$	CARİ FAZLA \$
2011	\$12.163.392,22	\$26.701.658,55	\$38.865.050,77	-\$14.538.266,33
2010	\$15.654.942,11	\$16.331.945,18	\$31.986.887,29	-\$677.003,07
2009	\$8.774.735,40	\$12.355.649,21	\$21.130.384,61	-\$3.580.913,81
2008	\$17.556.572,85	\$17.487.870,19	\$35.044.443,04	\$68.702,66
2007	\$16.685.664,78	\$38.476.194,48	\$55.161.859,26	-\$21.790.529,70
2006	\$12.278.912,42	\$84.731.551,65	\$97.010.464,07	-\$72.452.639,23
2005	\$9.517.948,61	\$14.805.834,82	\$24.323.783,43	-\$5.287.886,21
2004	\$231.452,74	\$12.027.200,78	\$12.258.653,52	-\$11.795.748,04
2003	\$339.062,60	\$8.999.981,99	\$9.339.044,59	-\$8.660.919,39
2002	\$1.954.100,27	\$0,00	\$1.954.100,27	\$1.954.100,27
10 YIL TOPLAM	\$95.156.784,00	\$231.917.886,85	\$327.074.670,85	-\$136.761.102,85

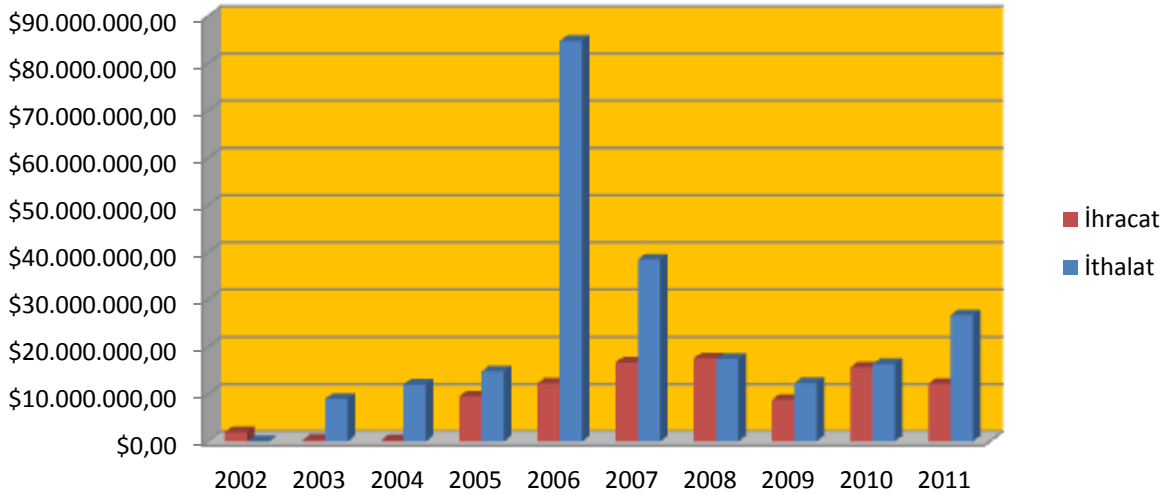
2002 - 2011 İNEGÖL OTOMOTİV YAN SANAYİ SEKTÖRÜ İHRACAT TRENDİ



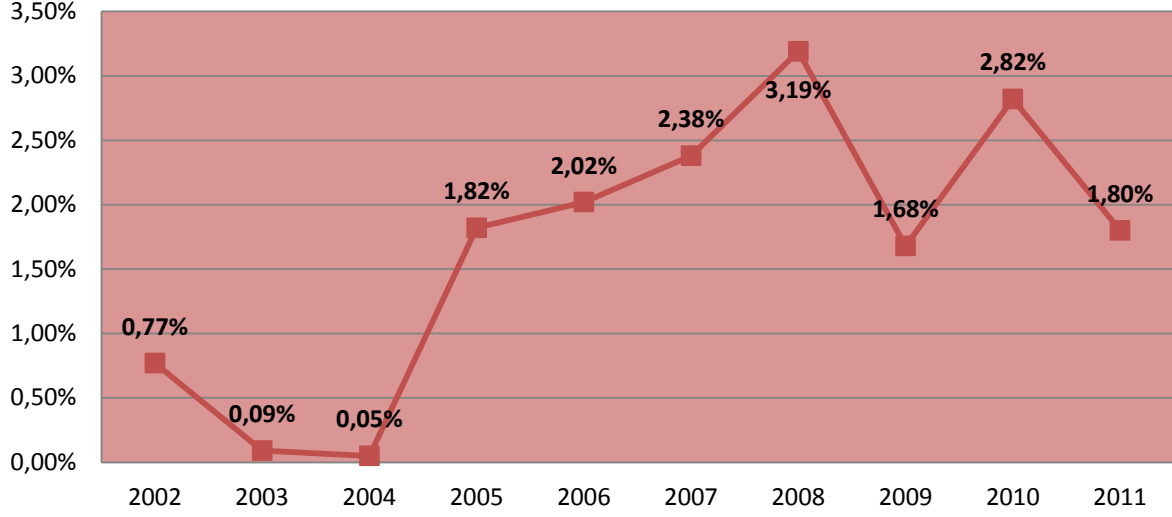
2002 - 2011 İNEGÖL OTOMOTİV YAN SANAYİ SEKTÖRÜ İTHALAT TRENDİ



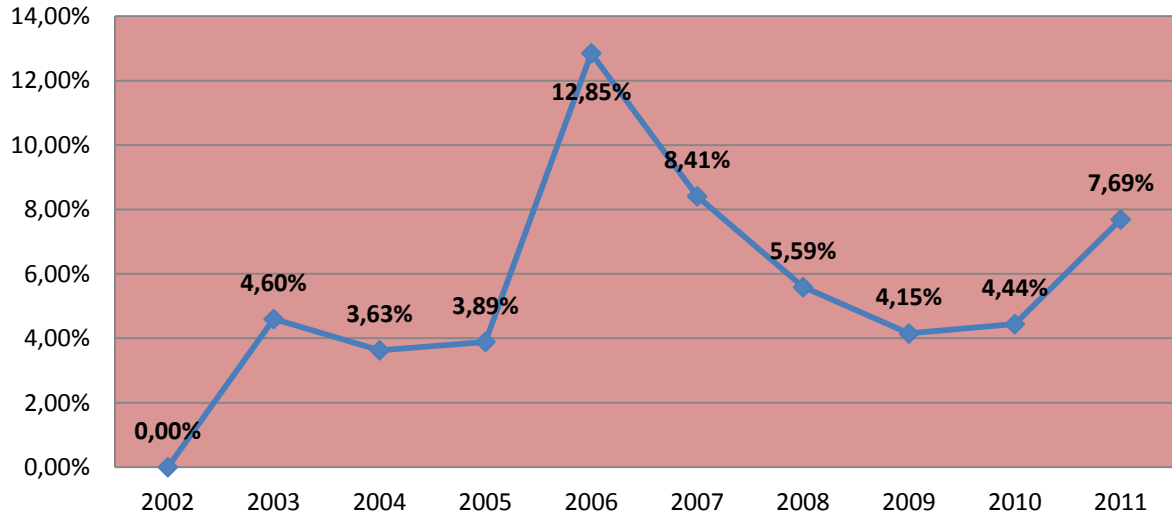
2002 - 2011 İNEGÖL OTOMOTİV YAN SANAYİ SEKTÖRÜ İHRACAT - İTHALAT KARŞILAŞTIRMASI



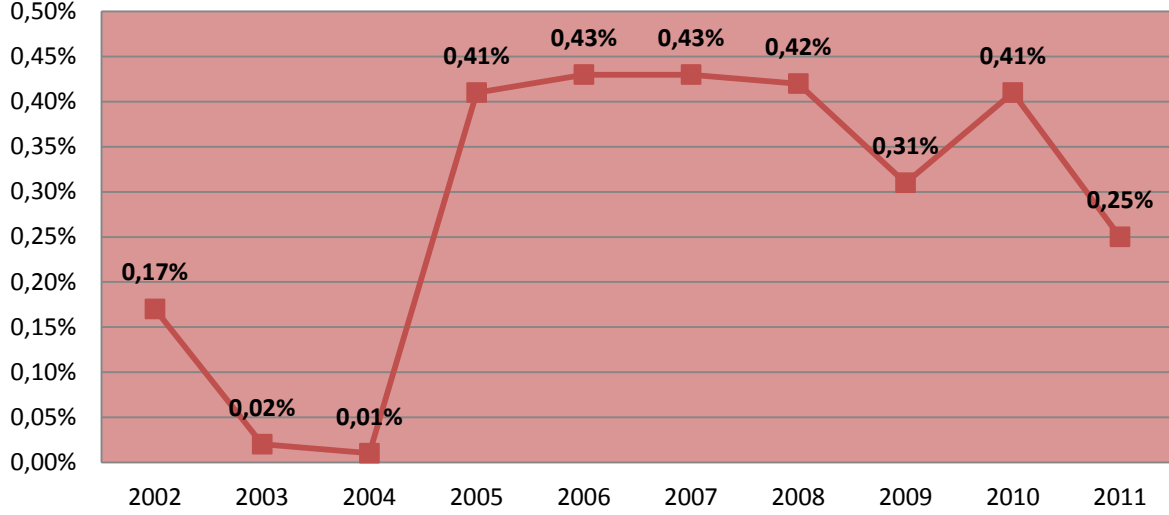
2002 - 2011 OTOMOTİV YAN SANAYİ SEKTÖRÜNÜN İNEGÖL İHRACATINDAKİ PAYI



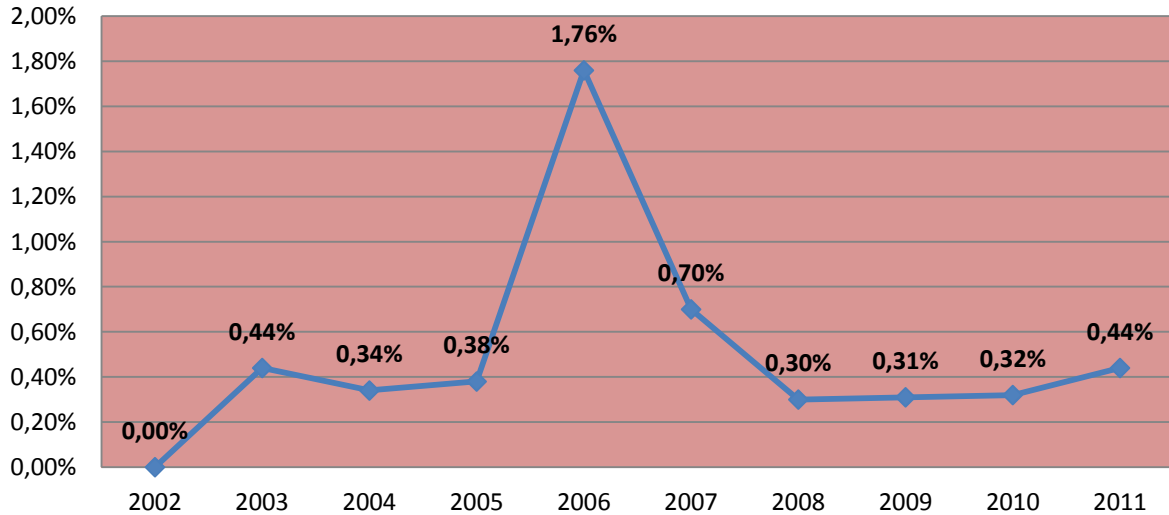
2002 - 2011 OTOMOTİV YAN SANAYİ SEKTÖRÜNÜN İNEGÖL İTHALATINDAKİ PAYI



2002 - 2011 İNEGÖL OTOMOTİV YAN SANAYİ SEKTÖRÜNÜN TÜRKİYE OTOMOTİV YAN SANAYİ İHRACATINDAKİ PAYI



2002 - 2011 İNEGÖL OTOMOTİV YAN SANAYİ SEKTÖRÜNÜN TÜRKİYE OTOMOTİV YAN SANAYİ İTHALATINDAKİ PAYI

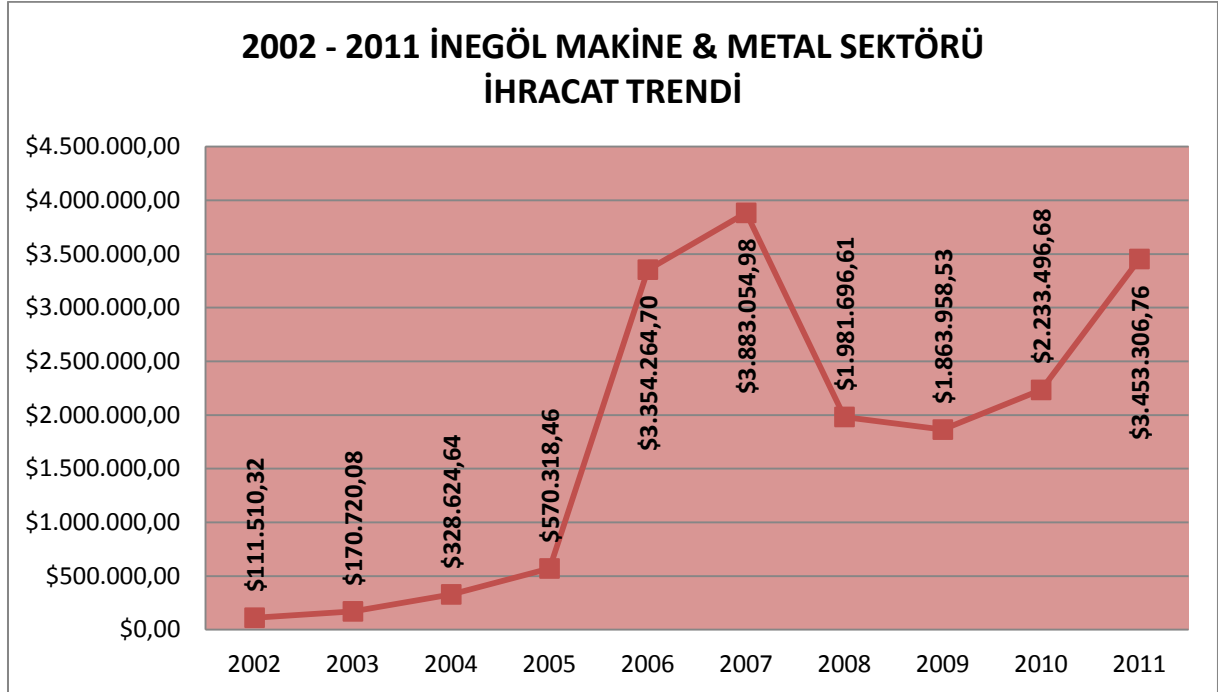


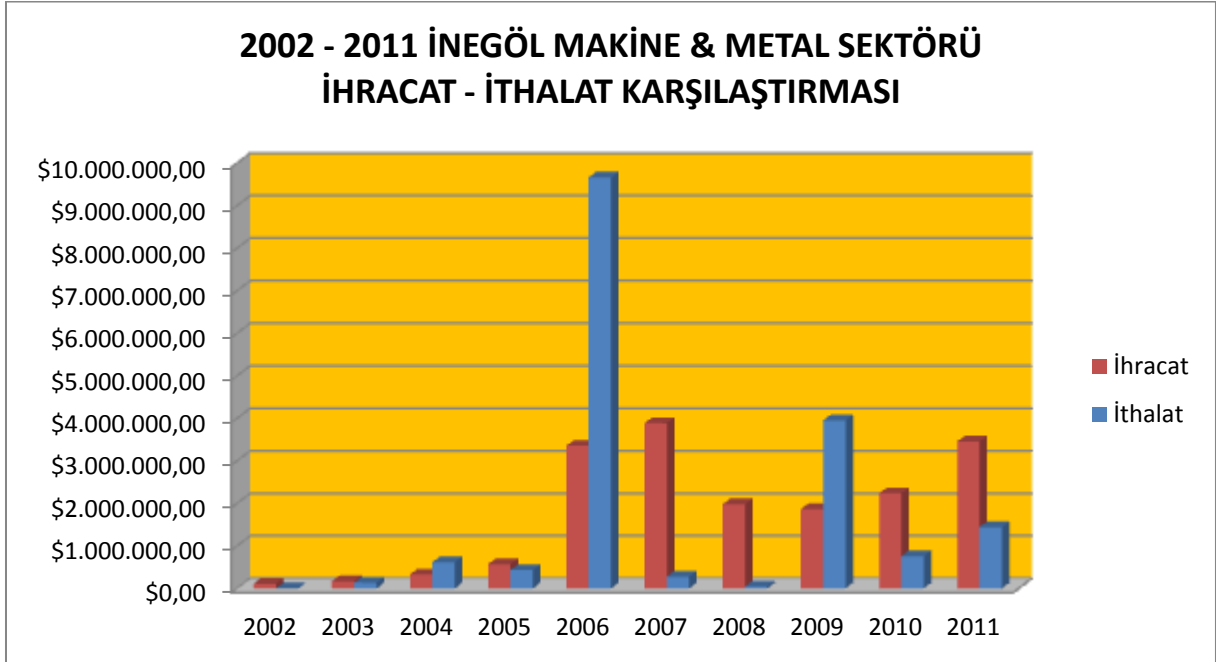
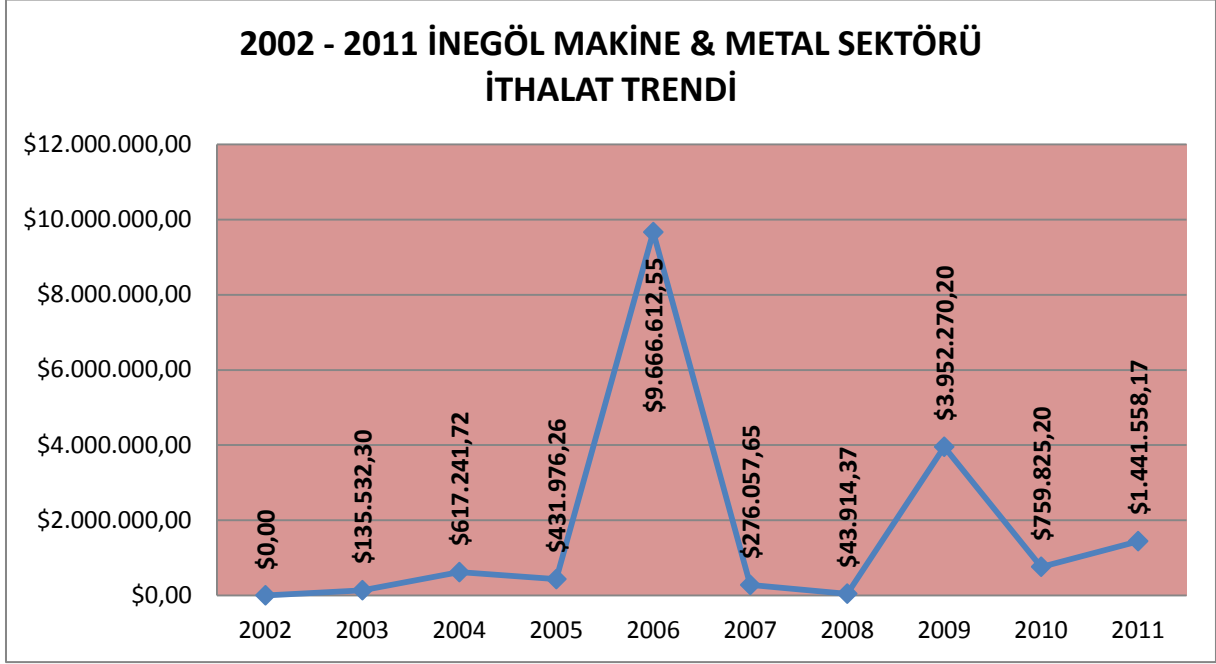
MAKİNE & METAL SEKTÖRÜ

2002 - 2011 İNEGÖL'ÜN MAKİNE & METAL SEKTÖRÜ

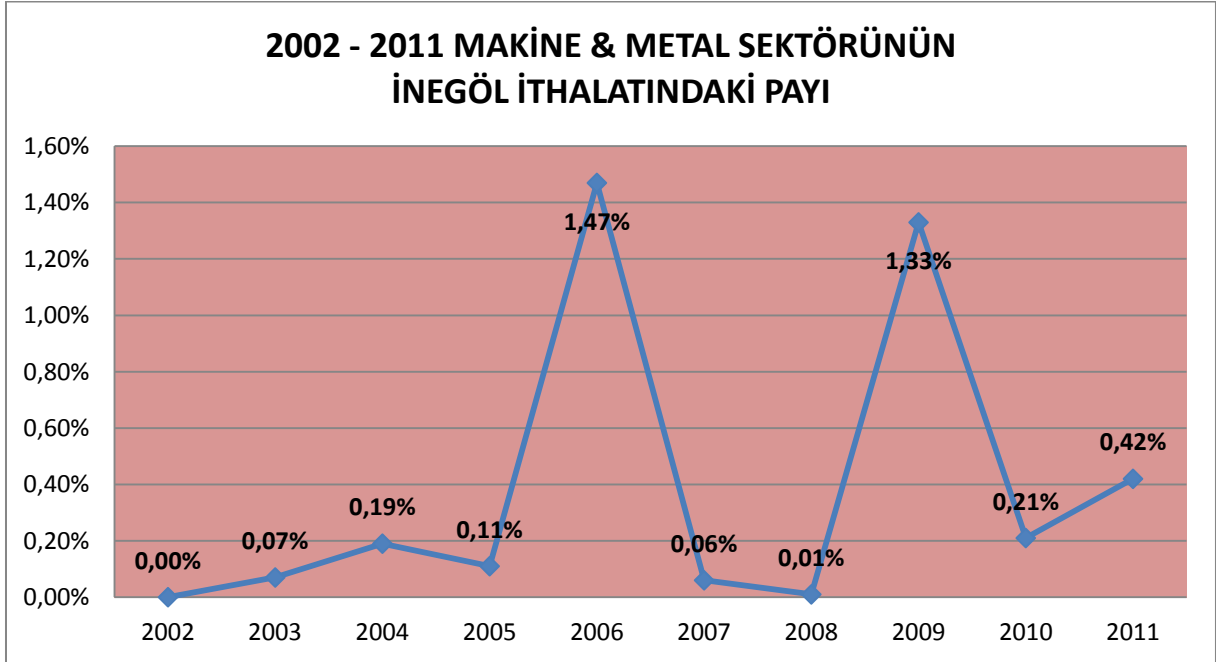
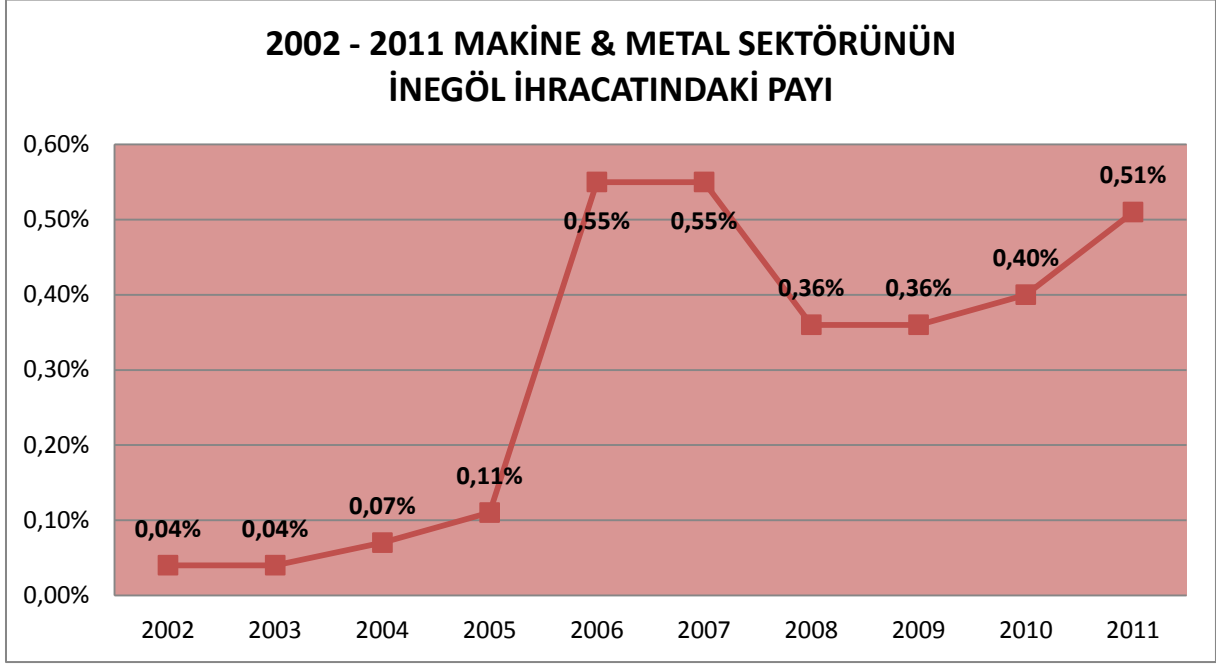
DIŞ TİCARET RAKAMLARI

YIL	İHRACAT \$	İTHALAT \$	DIŞ TİCARET HACMİ \$	CARİ FAZLA \$
2011	\$3.453.306,76	\$1.441.558,17	\$4.894.864,93	\$2.011.748,59
2010	\$2.233.496,68	\$759.825,20	\$2.993.321,88	\$1.473.671,48
2009	\$1.863.958,53	\$3.952.270,20	\$5.816.228,73	-\$2.088.311,67
2008	\$1.981.696,61	\$43.914,37	\$2.025.610,98	\$1.937.782,24
2007	\$3.883.054,98	\$276.057,65	\$4.159.112,63	\$3.606.997,33
2006	\$3.354.264,70	\$9.666.612,55	\$13.020.877,25	-\$6.312.347,85
2005	\$570.318,46	\$431.976,26	\$1.002.294,72	\$138.342,20
2004	\$328.624,64	\$617.241,72	\$945.866,36	-\$288.617,08
2003	\$170.720,08	\$135.532,30	\$306.252,38	\$35.187,78
2002	\$111.510,32	\$0,00	\$111.510,32	\$111.510,32
10 YIL TOPLAM	\$17.950.951,76	\$17.324.988,42	\$35.275.940,18	\$625.963,34





İNEGÖL'ÜN DIŞ TİCARETİNDE SON 10 YIL



İNEGÖL'ÜN DIŞ TİCARETİNDE SON 10 YIL

**2002 - 2011 İNEGÖL MAKİNE & METAL SEKTÖRÜNÜN
TÜRKİYE MAKİNE & METAL İHRACATINDAKİ PAYI**



**2002 - 2011 İNEGÖL MAKİNE & METAL SEKTÖRÜNÜN
TÜRKİYE MAKİNE & METAL İTHALATINDAKİ PAYI**

